

**FOR LEASE // 57 CHURCH HILL ROAD, NEWTOWN CT**

**57 CHURCH HILL ROAD  
NEWTOWN, CT.**



**PROPERTY DESCRIPTION**

Newly renovated 31,194 Sq Ft retail/ flex building directly off I84! Very rare opportunity to have a warehouse/show room or Retail with great exposure. This piece has ample parking, LED lighting, heavy power, 2 docks, and ability for multiple drive in doors. Many size options available. Owner is willing to build to suit. Renovations to be completed approx. quarter 2 2025. Catalyst Training Gyms already signed up! Do not miss your opportunity to move your business here!

**PROPERTY HIGHLIGHTS**

- City Water, Sewer and Gas
- Five (5) 200 Amp 120/208 Volt Meters
- One (1) 320 Amp 120/280 Meter for Unit 1 (15,000 SF)
- 1 Loading Docks
- 9' to 12' Ceilings
- Drive in's Available
- Owner Willing to Build to Suit
- Gas Heat

**OFFERING SUMMARY**

Available Sizes: +/- 3,434 -15,,278 SF

DEMOGRAPHICS	3 MILES	6 MILES	9 MILES
Total Households	5,671	22,433	70,374
Total Population	14,474	57,922	179,051
Average HH Income	\$135,257	\$137,449	\$116,593



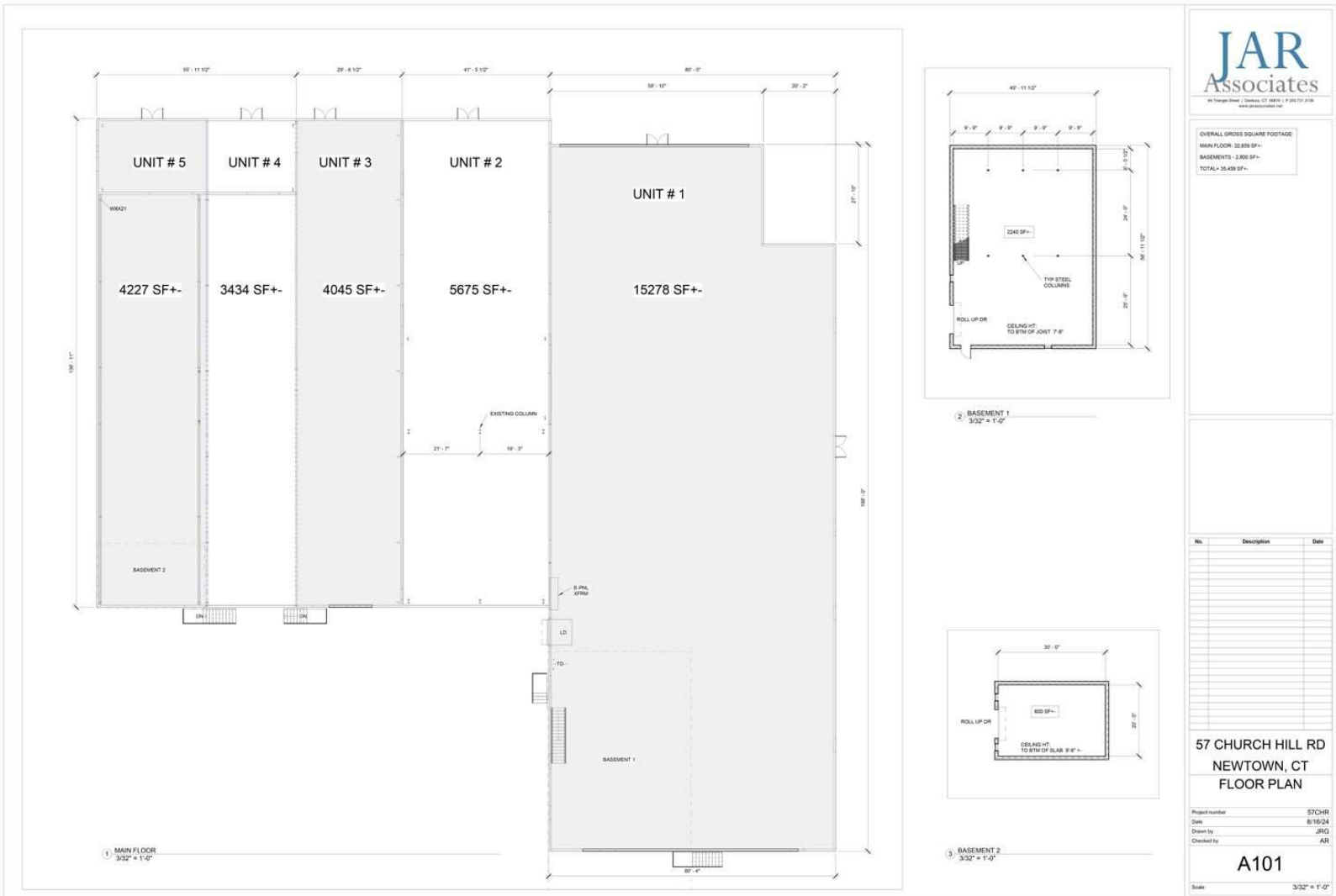
**JOE DIMYAN**

Broker

203.313.3920

jdimyan@towercorp.com

# FOR LEASE // 57 CHURCH HILL ROAD, NEWTOWN CT



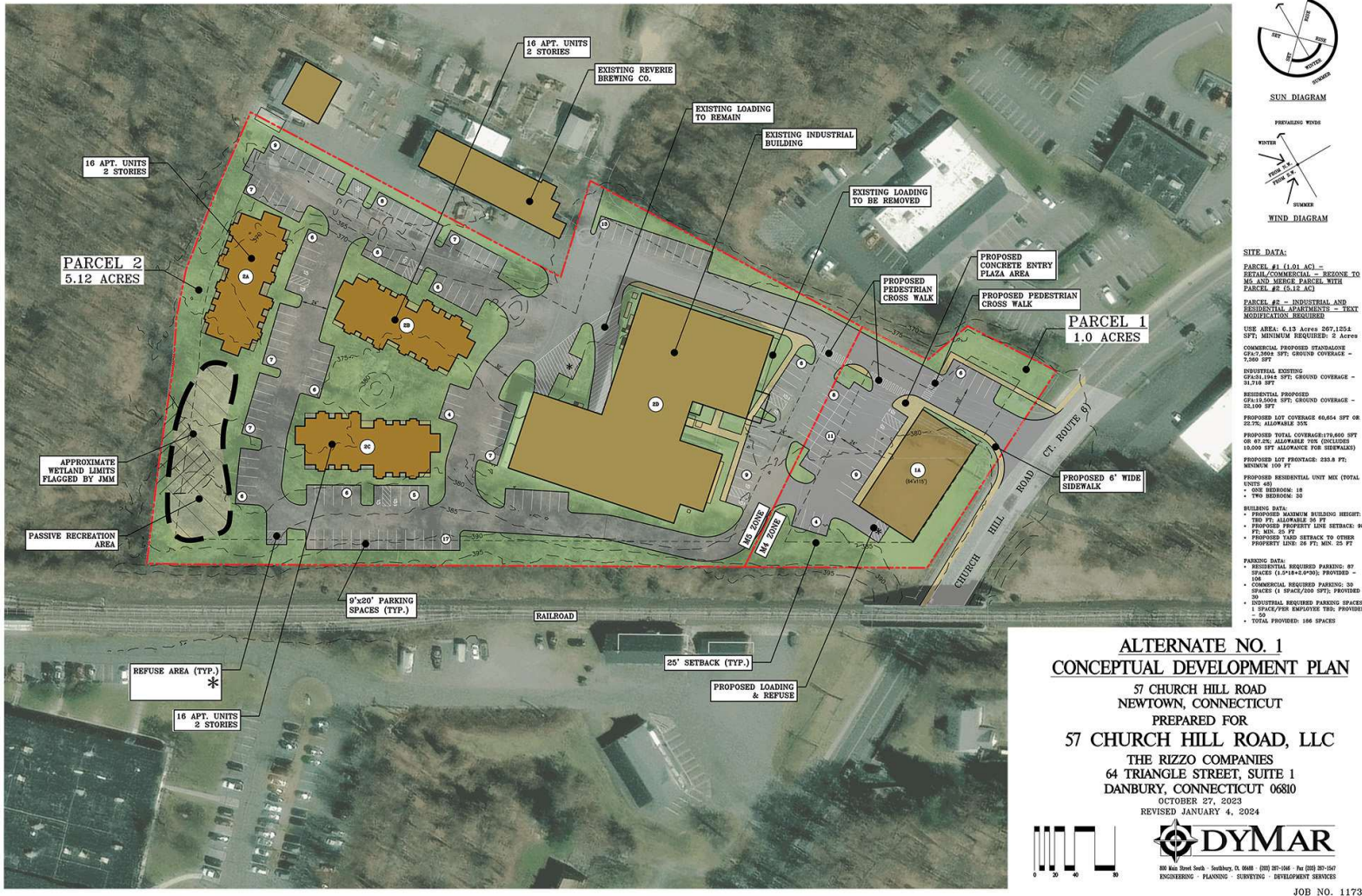
**JOE DIMYAN**

Broker

203.313.3920

jdimyan@towercorp.com

# FOR LEASE // 57 CHURCH HILL ROAD, NEWTOWN CT



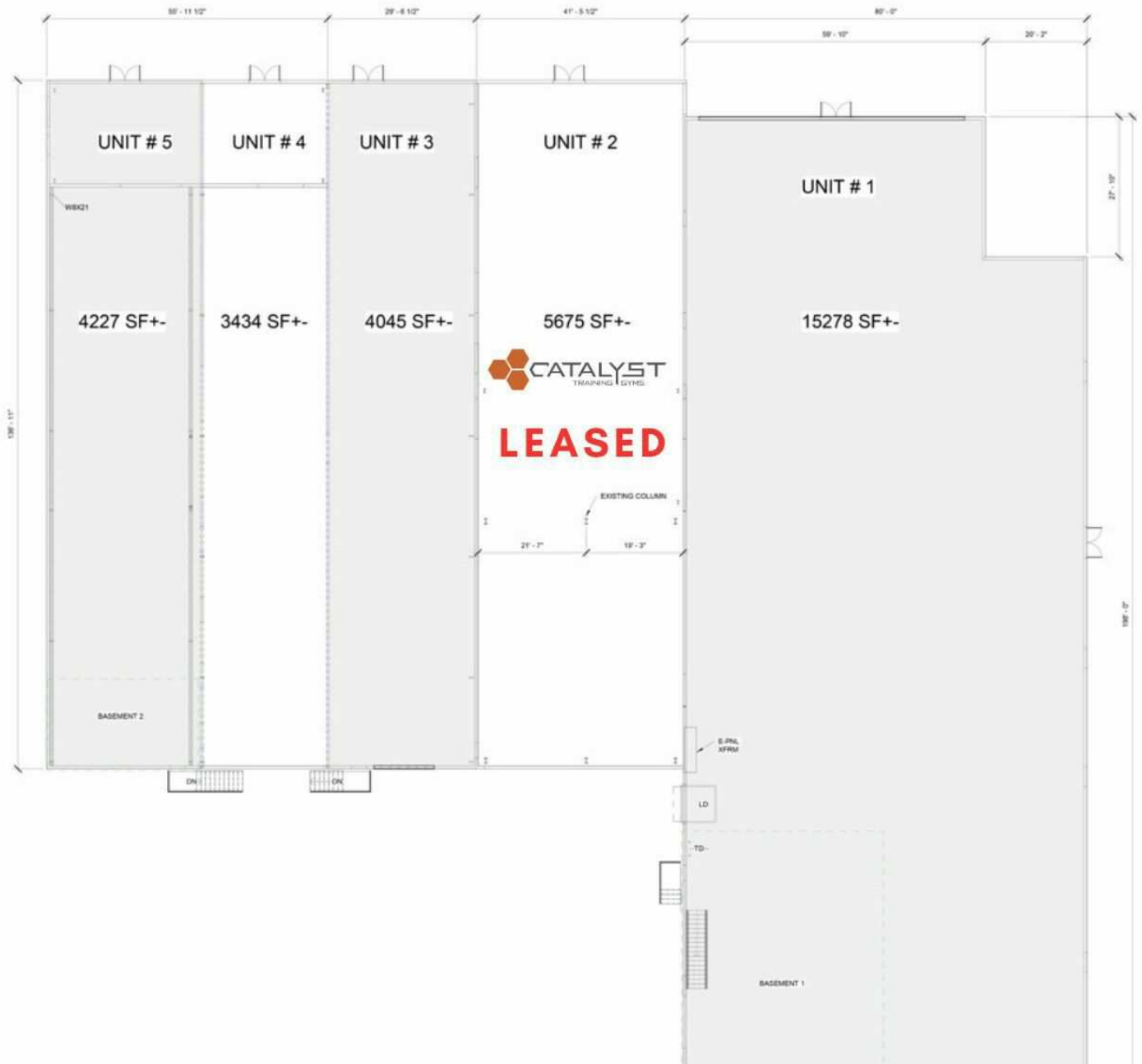
**JOE DIMYAN**

Broker

203.313.3920

jdimyan@towercorp.com

FOR LEASE // 57 CHURCH HILL ROAD, NEWTOWN CT



**JOE DIMYAN**

Broker

203.313.3920

jdimyan@towercorp.com



# FOR LEASE // 57 CHURCH HILL ROAD, NEWTOWN CT



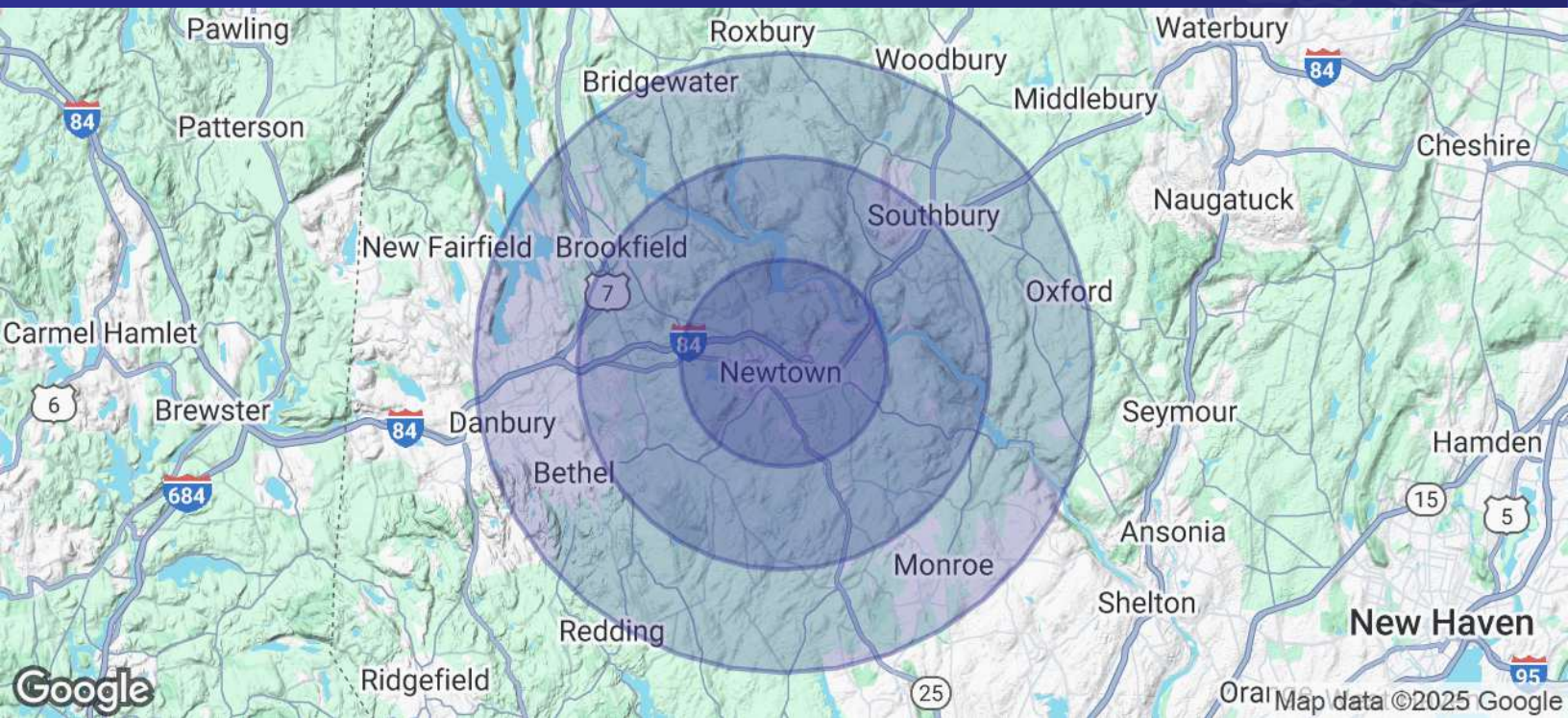
**JOE DIMYAN**

Broker

203.313.3920

jdimyan@towercorp.com

# FOR LEASE // 57 CHURCH HILL ROAD, NEWTOWN CT



POPULATION	3 MILES	6 MILES	9 MILES
Total Population	14,474	57,922	179,051
Average Age	45.7	46.1	43.8
Average Age (Male)	43.6	43.6	42.0
Average Age (Female)	47.7	47.9	44.7

HOUSEHOLDS & INCOME	3 MILES	6 MILES	9 MILES
Total Households	5,671	22,433	70,374
# of Persons per HH	2.6	2.6	2.5
Average HH Income	\$135,257	\$137,449	\$116,593
Average House Value	\$381,949	\$369,885	\$336,082

2020 American Community Survey (ACS)



## JOE DIMYAN

Broker

203.313.3920

jdimyan@towercorp.com