

FOR SALE // 10 STILL RIVER DR, NEW MILFORD, CT



PROPERTY DESCRIPTION

Welcome to a well built, 21,450 square-foot versatile building on 1.84 level acres! This site is currently a state of the art fitness facility with 100 car parking and is ideal for a variety of uses, including: warehouse, manufacturing, assembly, distribution, food processing, motor vehicle repair, kennels, professional office, medical office, and physical therapy. This property has a perfect southern New Milford location with easy access to RT. 7 and I 84!

OFFERING SUMMARY

Sale Price:	\$2,400,000
Building Size:	21,450 SF
Lot Size	1.84 Acres

DEMOGRAPHICS	0.3 MILES	0.5 MILES	1 MILE
Total Households	84	222	842
Total Population	208	559	2,131
Average HH Income	\$122,097	\$128,991	\$132,721

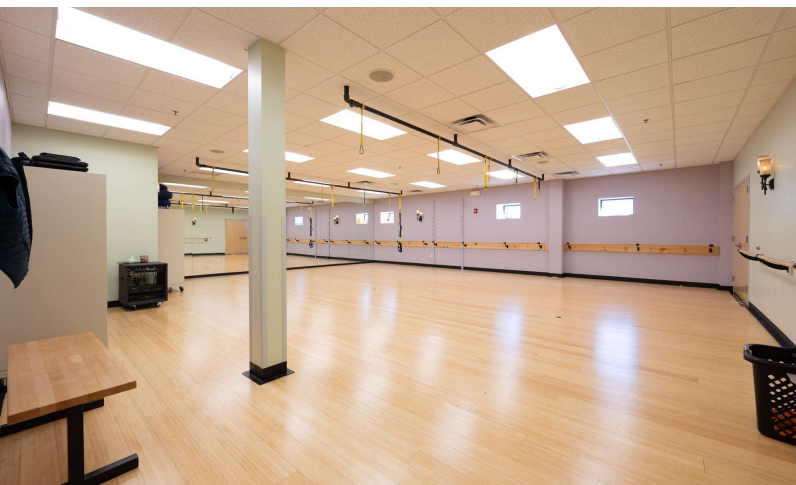


MICK CONSALVO
Broker
 203.241.5188
 mconsalvo@towercorp.com



TOMMY CONSALVO
Broker
 203.482.5792
 tconsalvo@towercorp.com

FOR SALE // 10 STILL RIVER DR, NEW MILFORD, CT



PROPERTY HIGHLIGHTS

- Built in 2010
- Fully sprinklered
- Full AC
- 400 Amp, 3 phase power.
- 100 car parking
- 5 Bathrooms, including 2 full locker rooms with sauna and steam rooms.
- Ceiling height: From 11' to 23' clear
- Elevator
- Steel and metal construction
- City water, sewer, and gas
- LED lighting inside and parking lot
- Day care area
- 3 large activity rooms
- Golf simulator.
- 6" concrete slab floors on first and second floor.
- 100 car parking.
- 200+ Feet of road frontage.
- Eight roof top HVAC units, totaling 65 Tons.



MICK CONSALVO
Broker
 203.241.5188
 mconsalvo@towercorp.com



TOMMY CONSALVO
Broker
 203.482.5792
 tconsalvo@towercorp.com

FOR SALE // 10 STILL RIVER DR, NEW MILFORD, CT

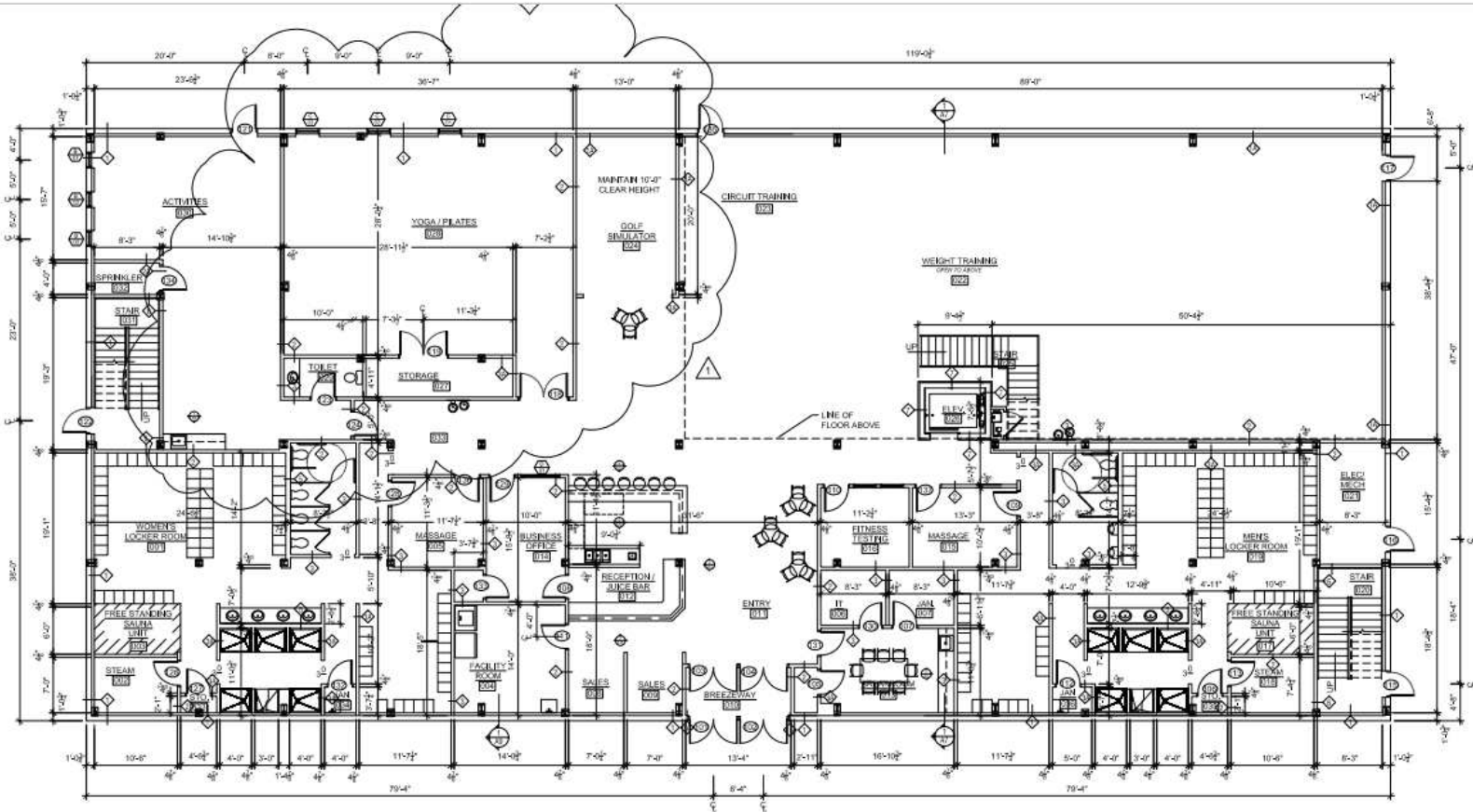


MICK CONSALVO
Broker
203.241.5188
mconsalvo@towercorp.com



TOMMY CONSALVO
Broker
203.482.5792
tconsalvo@towercorp.com

FOR SALE // 10 STILL RIVER DR, NEW MILFORD, CT

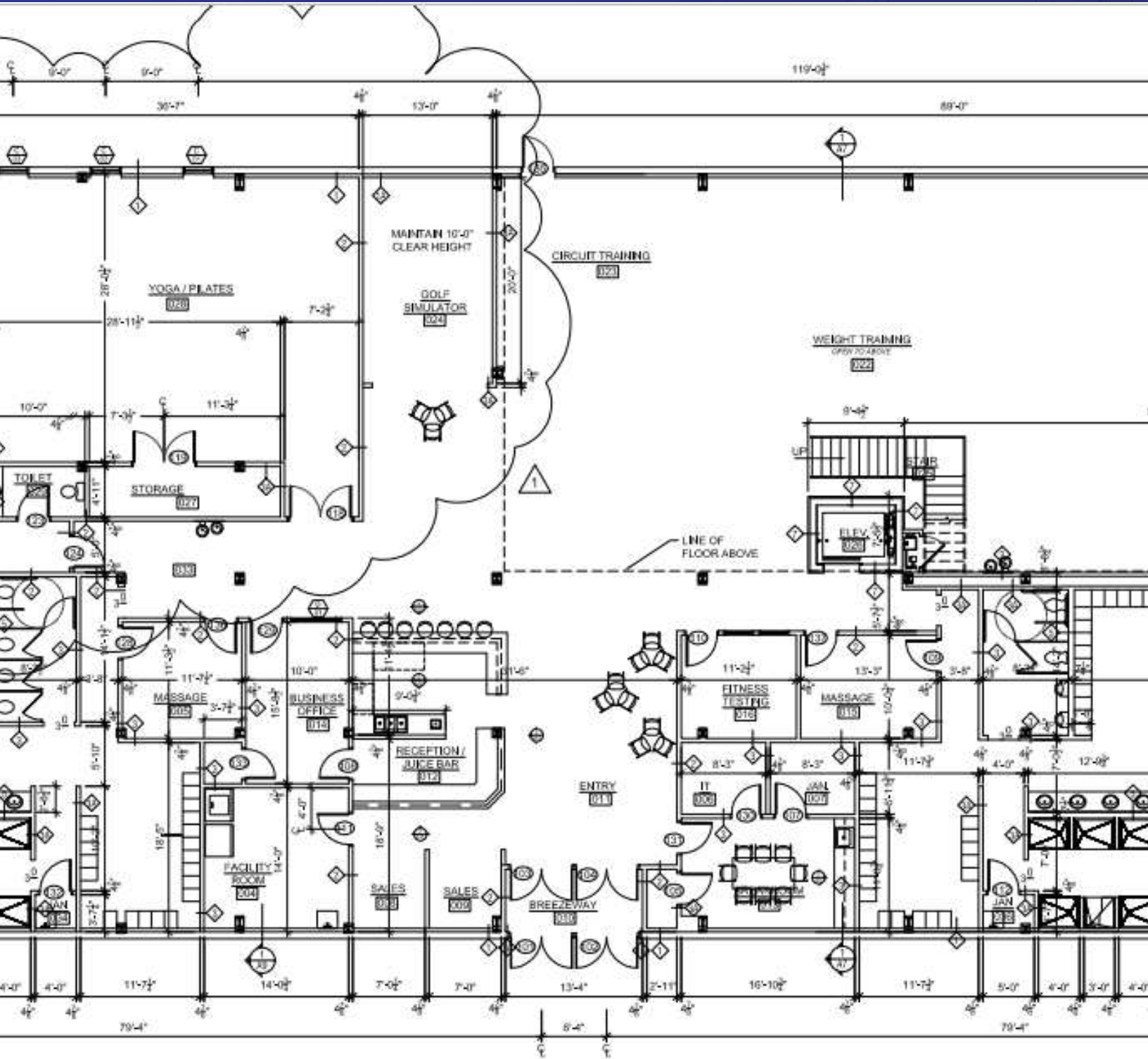


MICK CONSALVO
Broker
 203.241.5188
 mconsalvo@towercorp.com



TOMMY CONSALVO
Broker
 203.482.5792
 tconsalvo@towercorp.com

FOR SALE // 10 STILL RIVER DR, NEW MILFORD, CT



MICK CONSALVO

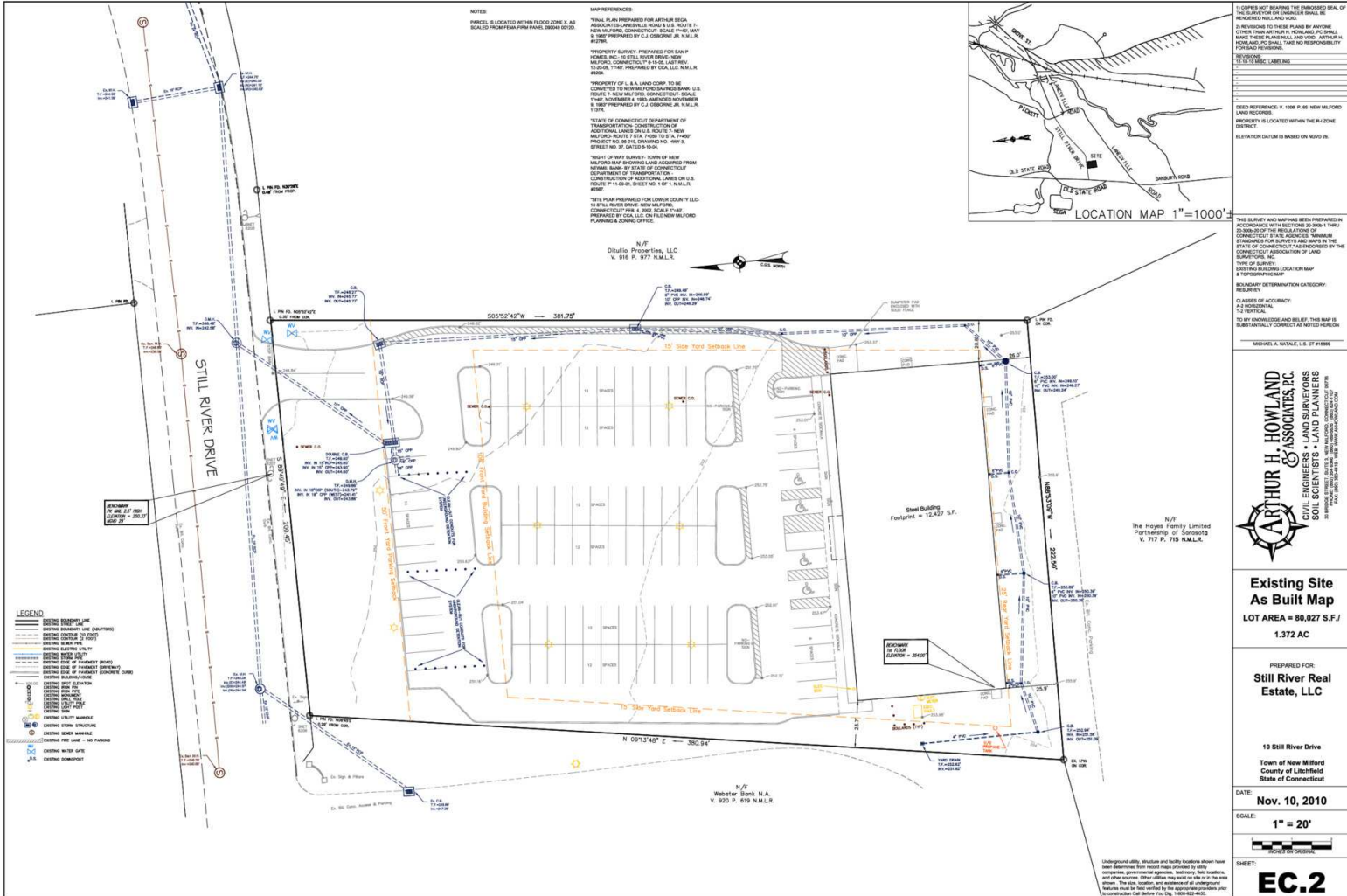
Broker
203.241.5188
mconsalvo@towercorp.com



TOMMY CONSALVO

Broker
203.482.5792
tconsalvo@towercorp.com

FOR SALE // 10 STILL RIVER DR, NEW MILFORD, CT



1. COPIES NOT BEARING THE EMBOSSED SEAL OF THE SURVEYOR OR ENGINEER SHALL BE REVERSED NULL AND VOID.

2. APPROVED BY THESE PLANS BY ANYONE OTHER THAN SURVEYOR OR ENGINEER SHALL MAKE THESE PLANS NULL AND VOID. SURVEYOR HAS NO LIABILITY FOR SUCH REVISIONS.

REVISIONS:

NO.	DATE	DESCRIPTION

DEED REFERENCE: V. 108 P. 86 NEW MILFORD LAND RECORDS.

PROPERTY IS LOCATED WITHIN THE R-1 ZONE DISTRICT.

ELEVATION DATUM IS BASED ON NAVD 28.

THIS SURVEY AND MAP HAS BEEN PREPARED IN ACCORDANCE WITH SECTION 20-211a (1) TO 20-211b (3) OF THE REGULATIONS ON CONSTRUCTION OF PUBLIC ADMINISTRATION STANDARDS FOR SURVEYING AND MAPPING IN THE STATE OF CONNECTICUT AS ENFORCED BY THE CONNECTICUT DEPARTMENT OF LAND SURVEYING, INC.

THIS IS A SURVEY LOCATION MAP & TOPOGRAPHIC MAP.

BOUNDARY DETERMINATION CATEGORY: RESIDENTIAL.

CLASSIFICATION OF ACCURACY: A-2 (CONVENTIONAL).

TO MY KNOWLEDGE AND BELIEF, THIS MAP IS SUBSTANTIALLY CORRECT AS NOTED HEREON.

MICHAEL A. WATKINS, L.S. & C.T.#1886

ARTHUR H. HOWLAND & ASSOCIATES, P.C.
 CIVIL ENGINEERS & LAND SURVEYORS
 230 HULL STREET SUITE 101 NEW MILFORD, CONNECTICUT 06455
 PHONE: (860) 339-8800 FAX: (860) 339-8801
 WWW.AHSAURV.COM

Existing Site As Built Map
 LOT AREA = 80,027 S.F. / 1.372 AC

PREPARED FOR:
Still River Real Estate, LLC

10 Still River Drive
 Town of New Milford
 County of Litchfield
 State of Connecticut

DATE: **Nov. 10, 2010**
 SCALE: **1" = 20'**

SHEET: **EC.2**



MICK CONSALVO
Broker
 203.241.5188
 mconsalvo@towercorp.com



TOMMY CONSALVO
Broker
 203.482.5792
 tconsalvo@towercorp.com

FOR SALE // 10 STILL RIVER DR, NEW MILFORD, CT



Map data ©2024 Google



MICK CONSALVO

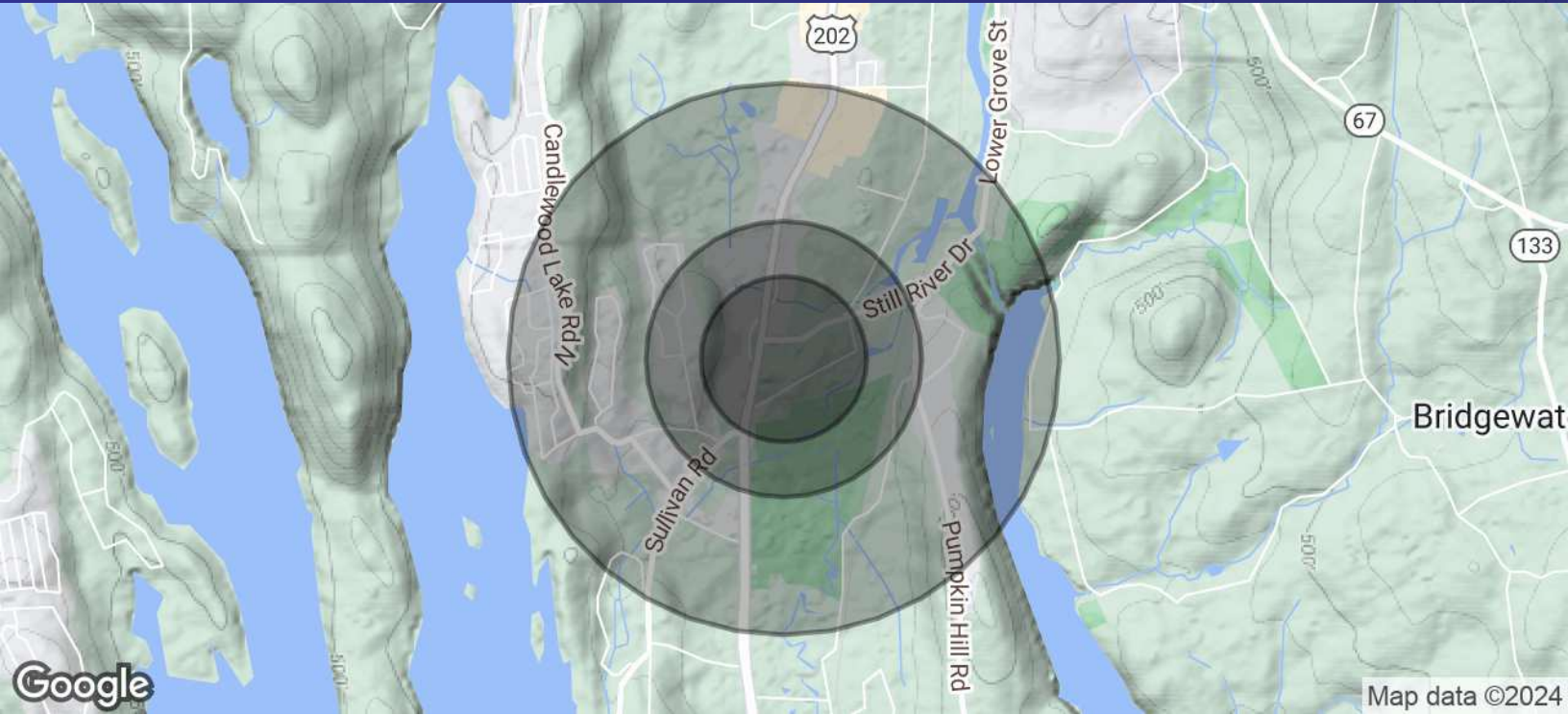
Broker
203.241.5188
mconsalvo@towercorp.com



TOMMY CONSALVO

Broker
203.482.5792
tconsalvo@towercorp.com

FOR SALE // 10 STILL RIVER DR, NEW MILFORD, CT



POPULATION	0.3 MILES	0.5 MILES	1 MILE
Total Population	208	559	2,131
Average Age	41	41	42
Average Age (Male)	0	0	0
Average Age (Female)	0	0	0

HOUSEHOLDS & INCOME	0.3 MILES	0.5 MILES	1 MILE
Total Households	84	222	842
# of Persons per HH	2.5	2.5	2.5
Average HH Income	\$122,097	\$128,991	\$132,721
Average House Value	\$384,830	\$403,293	\$437,115

Demographics data derived from AlphaMap



MICK CONSALVO

Broker
203.241.5188
mconsalvo@towercorp.com



TOMMY CONSALVO

Broker
203.482.5792
tconsalvo@towercorp.com