

FOR LEASE // WAREHOUSE SPACE (NEW CONSTRUCTION)



PROPERTY DESCRIPTION

NEW CONSTRUCTION! Ideal space for warehouse, distribution, assembly, R&D or light manufacturing. Great location on Rt. 7 with easy access to I-84!

PROPERTY HIGHLIGHTS

- Construction: Metal with Glass Front
- Zoning: C-GN
- Electrical: 200 Amp, 3 Phase Each Unit
- Ceiling Height: +/- 25 Ft
- Loading: One 14' x 14' Drive-In Door Per Unit, Shared Loading Dock
- Heating: Gas Heat
- Plumbing: One Bath and Slop Sink Per Unit. Rough-In Plumbing for Second Bath in Place
- Utilities: City Water, Sewer + Gas
- Clearspan Construction

984 FEDERAL RD, BROOKFIELD, CT

Lease Rate:	\$15.00 SF/yr (Gross)
Number of Units:	7
Available SF:	Units From: 2,592 to 18,144 SF
Building Size:	18,000 SF

DEMOGRAPHICS	0.5 MILES	1 MILE	1.5 MILES
Total Households	347	1,198	2,349
Total Population	851	3,053	6,032
Average HH Income	\$150,763	\$137,314	\$135,119

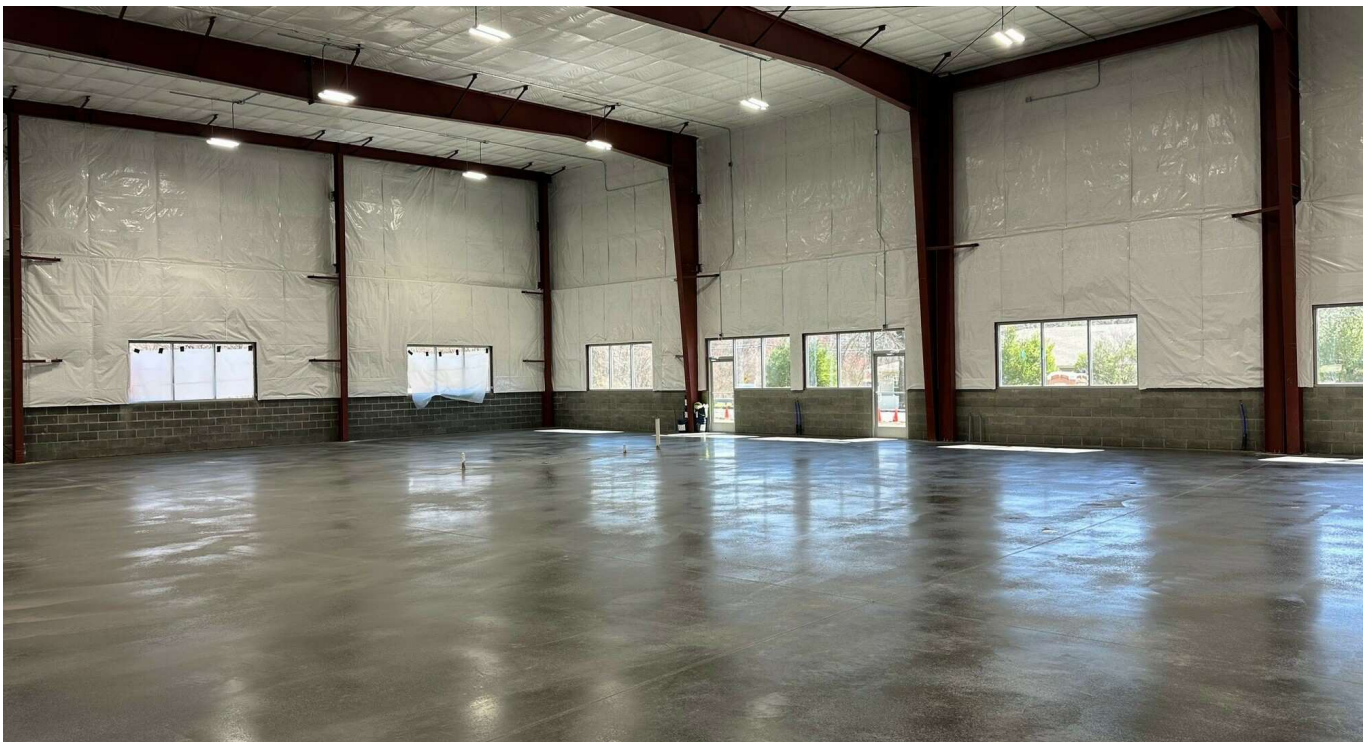


MICK CONSALVO
Broker
 203.241.5188
 mconsalvo@towercorp.com



TOMMY CONSALVO
Broker
 203.482.5792
 tconsalvo@towercorp.com

FOR LEASE // WAREHOUSE SPACE (NEW CONSTRUCTION)

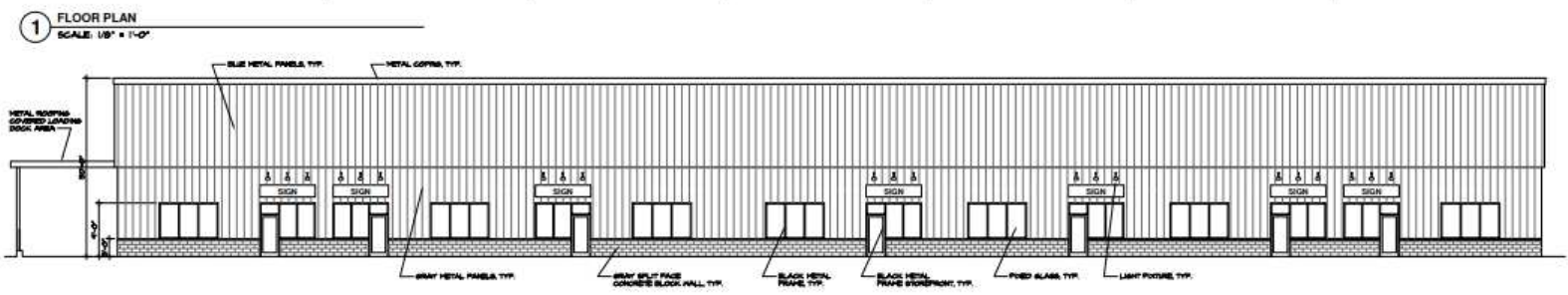


MICK CONSALVO
Broker
203.241.5188
mconsalvo@towercorp.com



TOMMY CONSALVO
Broker
203.482.5792
tconsalvo@towercorp.com

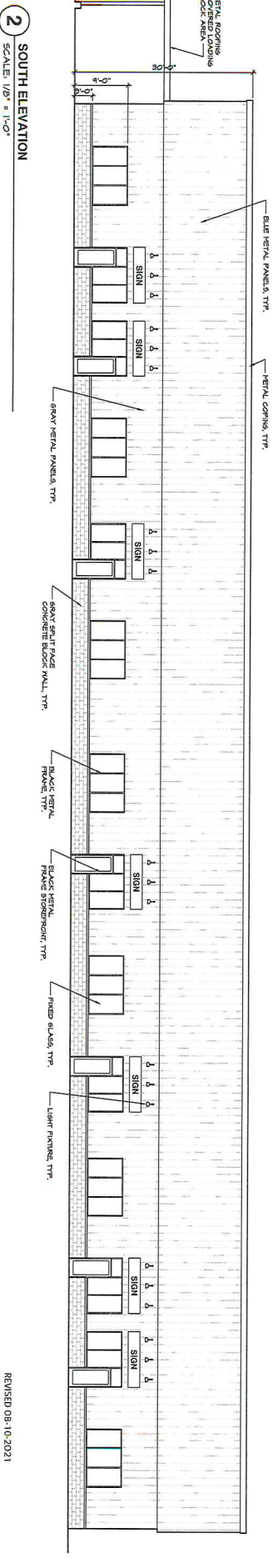
FOR LEASE // WAREHOUSE SPACE (NEW CONSTRUCTION)



MICK CONSALVO
Broker
203.241.5188
mconsalvo@towercorp.com



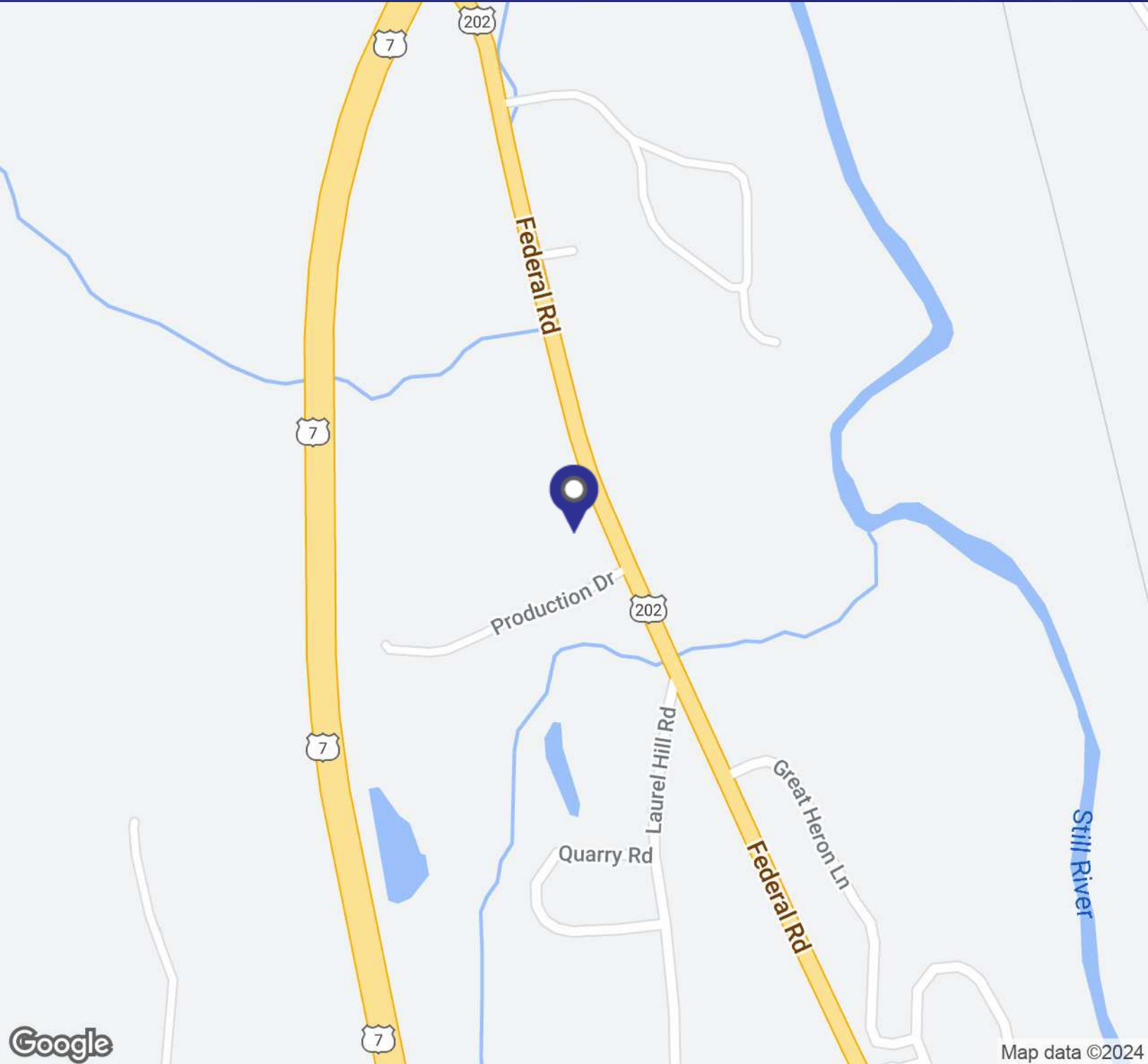
TOMMY CONSALVO
Broker
203.482.5792
tconsalvo@towercorp.com



Elevated Design Works, LLC 17 Biddford Lane New Milford, CT 06776 Email: bdesigns@elevated.net		SCHEMATIC DESIGN FLOOR PLAN FRONT ELEVATION		NEW WAREHOUSE BUILDING 7 TENANTS 484-484A FEDERAL ROAD BROOKFIELD, CONNECTICUT	
Drawn by: CB Checked by: RB Date: 05-24-21 Scale: As noted Job No.: 1166	Drawing No.				SD-1

REVISED 08-10-2021
 REVISED 07-19-2021

FOR LEASE // WAREHOUSE SPACE (NEW CONSTRUCTION)



MICK CONSALVO

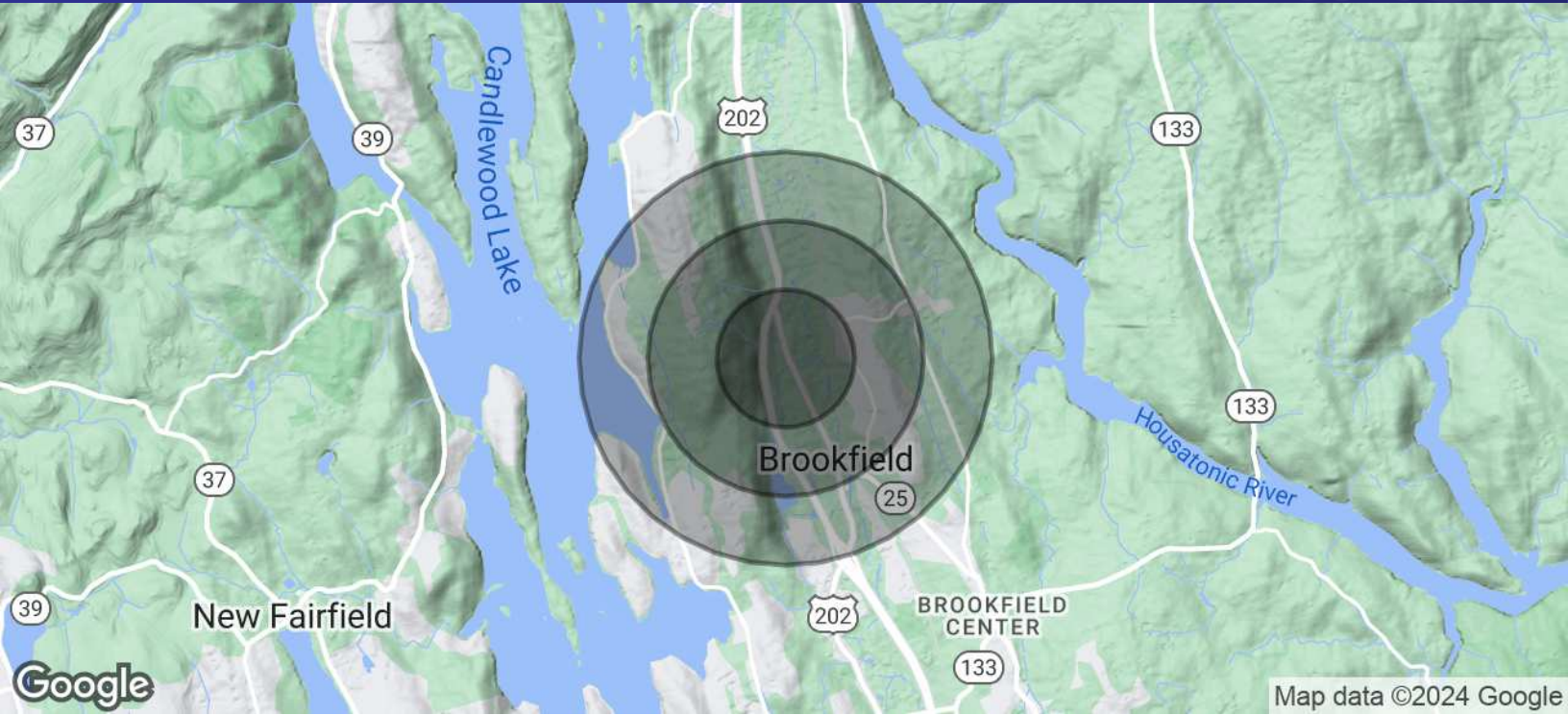
Broker
203.241.5188
mconsalvo@towercorp.com



TOMMY CONSALVO

Broker
203.482.5792
tconsalvo@towercorp.com

FOR LEASE // WAREHOUSE SPACE (NEW CONSTRUCTION)



POPULATION	0.5 MILES	1 MILE	1.5 MILES
Total Population	851	3,053	6,032
Average Age	48.2	45.2	43.1
Average Age (Male)	39.2	40.5	40.6
Average Age (Female)	51.7	46.4	43.5

HOUSEHOLDS & INCOME	0.5 MILES	1 MILE	1.5 MILES
Total Households	347	1,198	2,349
# of Persons per HH	2.5	2.5	2.6
Average HH Income	\$150,763	\$137,314	\$135,119
Average House Value	\$409,912	\$399,952	\$403,801

2020 American Community Survey (ACS)



MICK CONSALVO

Broker
203.241.5188
mconsalvo@towercorp.com



TOMMY CONSALVO

Broker
203.482.5792
tconsalvo@towercorp.com