



TOWER REALTY CORP.

SPECIALISTS IN COMMERCIAL AND INDUSTRIAL REAL ESTATE



*~ FOR LEASE ~
OFFICE SPACE*

29 Taylor Avenue, Bethel, CT



Size:	+/- 1,750 Sq. Ft.
2nd Fl	Three Private Offices, Conference Room and 1 Bath
Zoning:	I
Year Built:	1989
Heating:	Gas
Cooling:	Central A/C
Utilities:	City Water; Sewer and Gas
Year Built:	1984
Parking:	12-Car
Lease Prices:	\$1,100 Monthly + Utilities



1,750 sq. ft. office space featuring high ceilings, lots of windows and hardwood floors. Building has automated generator, T1, high speed cable, central a/c and is wired for alarm. Unit has separate entrance and is individually metered for utilities. Conveniently located within walking distance to downtown Bethel.



mconsalvo@towercorp.com
203-241-5188

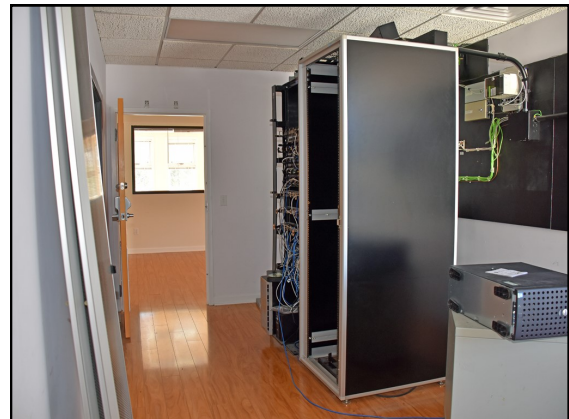


tconsalvo@towercorp.com
203-482-5792

Tower Realty Corp. / 246 Federal Rd., Suite D26, Brookfield, CT 06804 / www.towercorp.com

No warranty of representation, expressed or implied is made as to the accuracy of the information contained herein, and same is submitted subject to errors, omissions, change of price, rental, sale or other conditions, withdrawal without notice, and to any special listing conditions imposed by our principals.

Second Floor

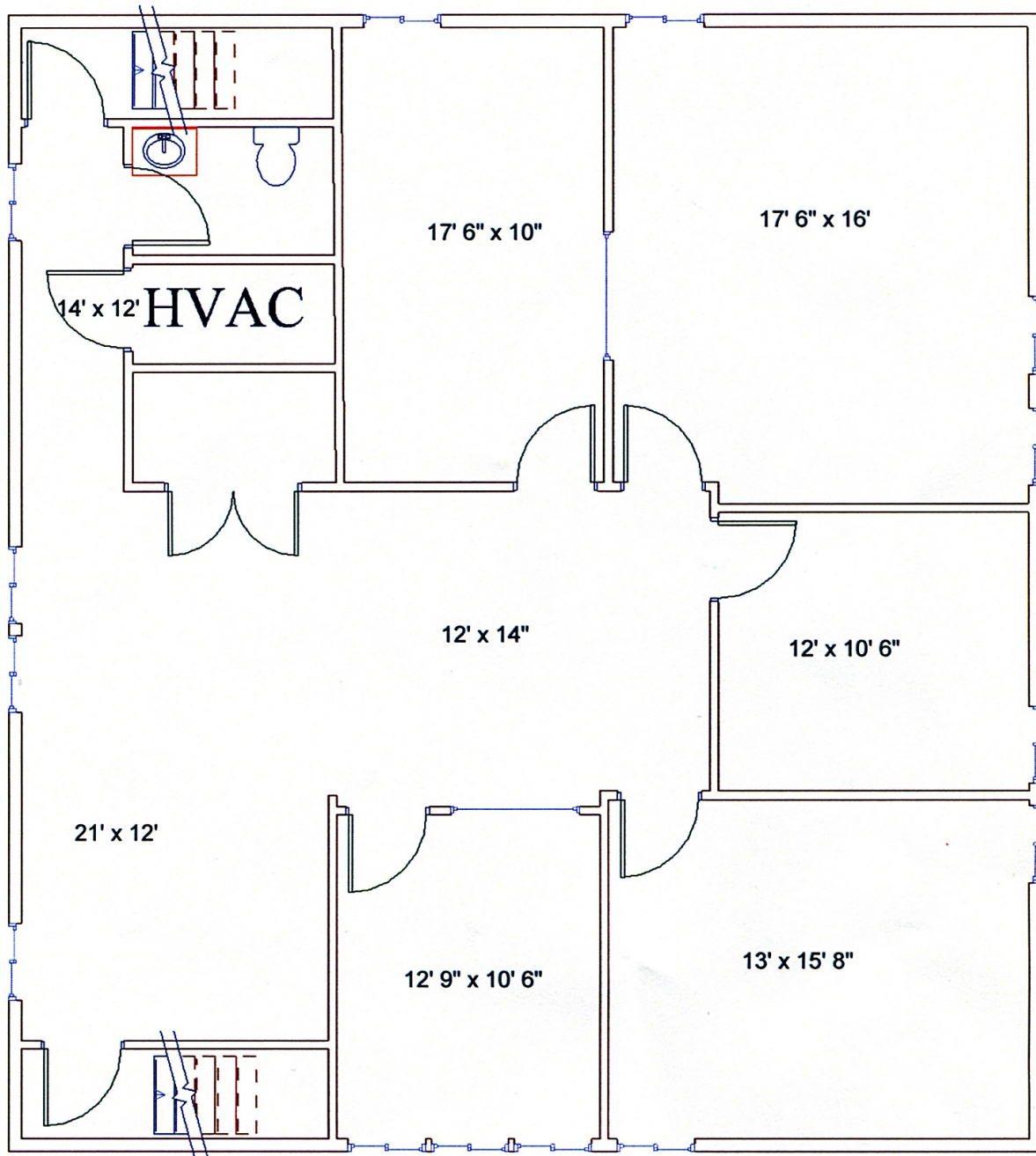


mconsalvo@towercorp.com
203-241-5188



tconsalvo@towercorp.com
203-482-5792

Second Floor



mconsalvo@towercorp.com
203-241-5188



tconsalvo@towercorp.com
203-482-5792

29 Taylor Avenue, Bethel, CT



mconsalvo@towercorp.com
203-241-5188



tconsalvo@towercorp.com
203-482-5792