

FOR SALE // 83 NEWTOWN ROAD, DANBURY CT



PROPERTY DESCRIPTION

Attention Investors! Rare opportunity to own a freestanding retail building in Danbury. Currently fully leased with long-term bank lease on the first floor and a corporate office lease on the second floor. Net operating income of \$185,280 with annual increases.

PROPERTY HIGHLIGHTS

- Tenants: Fully leased with Webster Bank and Greenfield Global.
- Long standing bank tenant since 2003 with 6.5 years remaining on NNN lease.
- Easy access to major interstate highway (I-84).
- Premium high volume traffic count +/- 35,000 vehicles daily (CT DOT, 2009).
- Two drive-thru windows.
- Close proximity to major retailers, medical, hotels and Amazon distribution center.
- Annual 2% increases for Webster Bank.
- Built in 2002, CG-20 zone (commercial)
- 117 Feet on Newtown Road (Rt. 6).
- Well-maintained building and grounds
- Taxes \$42,611.64 Yearly

OFFERING SUMMARY

Sale Price:	\$2,850,000
Building Size:	7,920 SF
NOI:	\$185,280.00
Cap Rate:	6.5%

DEMOGRAPHICS	0.5 MILES	1 MILE	1.5 MILES
Total Households	448	2,091	5,355
Total Population	1,300	6,093	14,667
Average HH Income	\$90,668	\$95,864	\$92,779



MICK CONSALVO

Broker

203.241.5188

mconsalvo@towercorp.com

FOR SALE // 83 NEWTOWN ROAD, DANBURY CT



MICK CONSALVO

Broker

203.241.5188

mconsalvo@towercorp.com

FOR SALE // 83 NEWTOWN ROAD, DANBURY CT

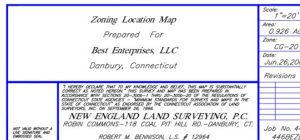


MICK CONSALVO

Broker

203.241.5188

mconsalvo@towercorp.com



FOR SALE // 83 NEWTOWN ROAD, DANBURY CT



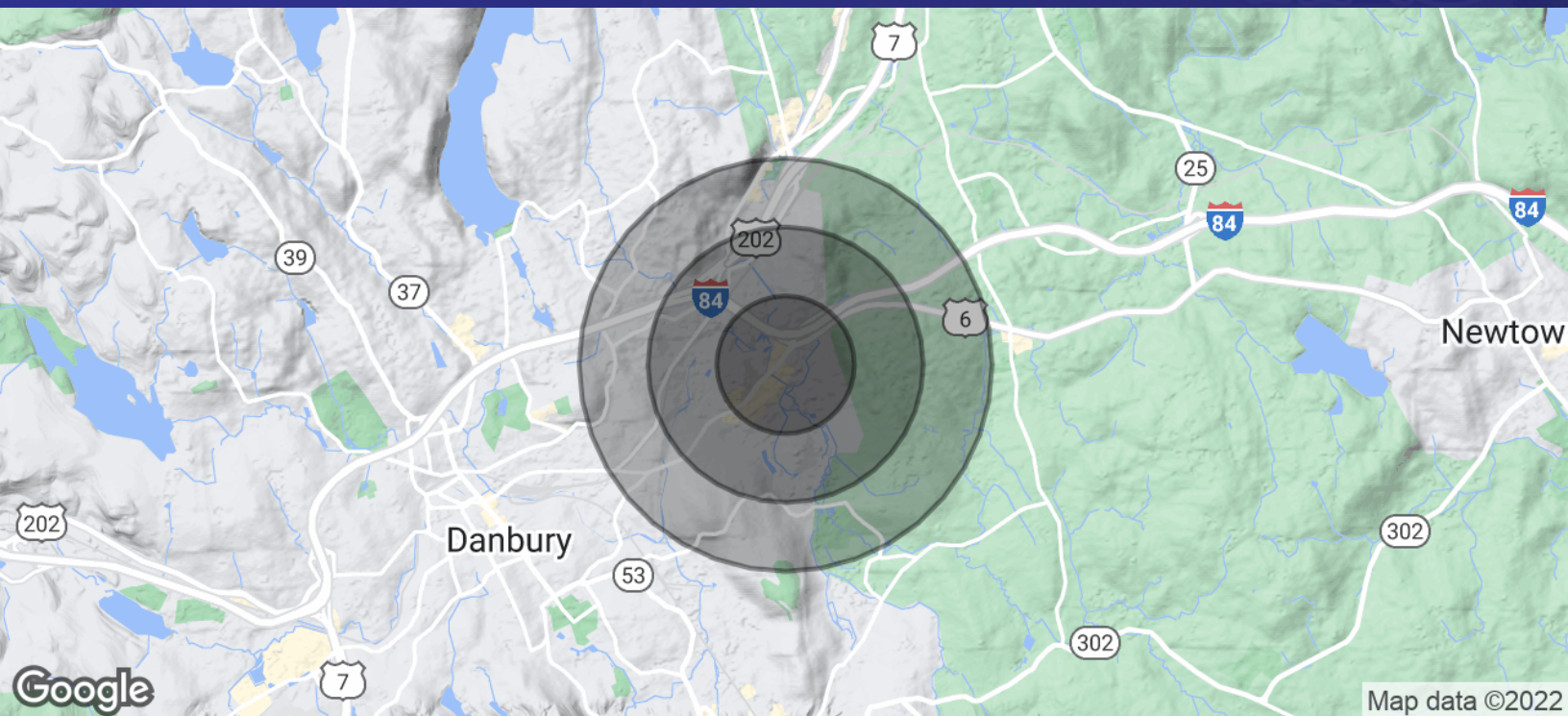
MICK CONSALVO

Broker

203.241.5188

mconsalvo@towercorp.com

FOR SALE // 83 NEWTOWN ROAD, DANBURY CT



POPULATION	0.5 MILES	1 MILE	1.5 MILES
Total Population	1,300	6,093	14,667
Average Age	32.9	34.6	37.7
Average Age (Male)	27.3	29.9	33.5
Average Age (Female)	38.6	38.9	41.0

HOUSEHOLDS & INCOME	0.5 MILES	1 MILE	1.5 MILES
Total Households	448	2,091	5,355
# of Persons per HH	2.9	2.9	2.7
Average HH Income	\$90,668	\$95,864	\$92,779
Average House Value	\$1,257,105	\$553,330	\$462,726

* Demographic data derived from 2020 ACS - US Census



MICK CONSALVO

Broker

203.241.5188

mconsalvo@towercorp.com