

~ FOR LEASE ~

**PROFESIONAL OFFICE SUITES**



**30 Bridge Street,  
New Milford, CT**

This is a truly special building in a truly special location. Referred to as the *Gateway to New Milford*, this historic red brick building was completely renovated. It is ADA compliant throughout. It has a state of the art sprinkler system, a compliant fire alarm system; beautifully paneled elevator; artistically tiled lobby entrance; and plenty of its own parking. All units have separate HVAC and Filter system.

The building combines the best of the old with the best of the new... making this a truly special place for any tenant to call "home".



Building Size:	+/- 23,000 Sq. Ft. (With Annex)
Available Units:	Unit 1: +/- 830 Sq. Ft. - \$958 + Utilities
	Unit 3: +/- 1,150 Sq. Ft. \$1,438 + Utilities
	Elevator: Yes; ADA Compliant
Zone:	B-2 (Commercial)
Utilities:	City Water; Sewer
Heating/Cooling:	Each Unit Has Separate Util. and HVAC System
Parking:	52 Spaces
	172 Public Spaces at Railroad Station



**Mick Consalvo**  
203.241-5188  
mconsalvo@towercorp.com



**Joe Dimyan**  
203.313-3920  
jdimyan@towercorp.com

Tower Realty Corp. / 246 Federal Rd., Suite D26, Brookfield, CT 06804 / [www.towercorp.com](http://www.towercorp.com)  
203-775-5000 Office / 203-546-7793 Fax

No warranty of representation, expressed or implied is made as to the accuracy of the information contained herein, and same is submitted subject to errors, omissions, change of price, rental, sale or other conditions, withdrawal without notice, and to any special listing conditions imposed by our principals.

~ 1st FLOOR FLOORPLAN ~

30 BRIDGE STREET,  
NEW MILFORD, CT



TOWER REALTY CORP.



**Mick Consalvo**  
203.241-5188  
mconsalvo@towercorp.com

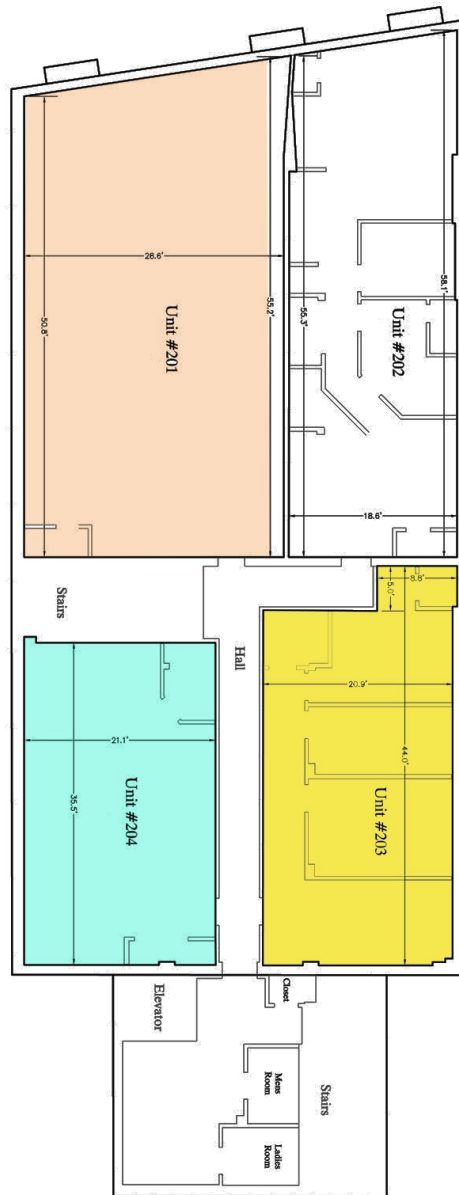


**Joe Dimyan**  
203.313-3920  
jdimyan@towercorp.com

Tower Realty Corp. / 246 Federal Rd., Suite D26, Brookfield, CT 06804 / [www.towercorp.com](http://www.towercorp.com)  
203-775-5000 Office / 203-546-7793 Fax

~ 2nd FLOOR FLOORPLAN ~

30 BRIDGE STREET,  
NEW MILFORD, CT



**Mick Consalvo**  
203.241-5188  
mconsalvo@towercorp.com



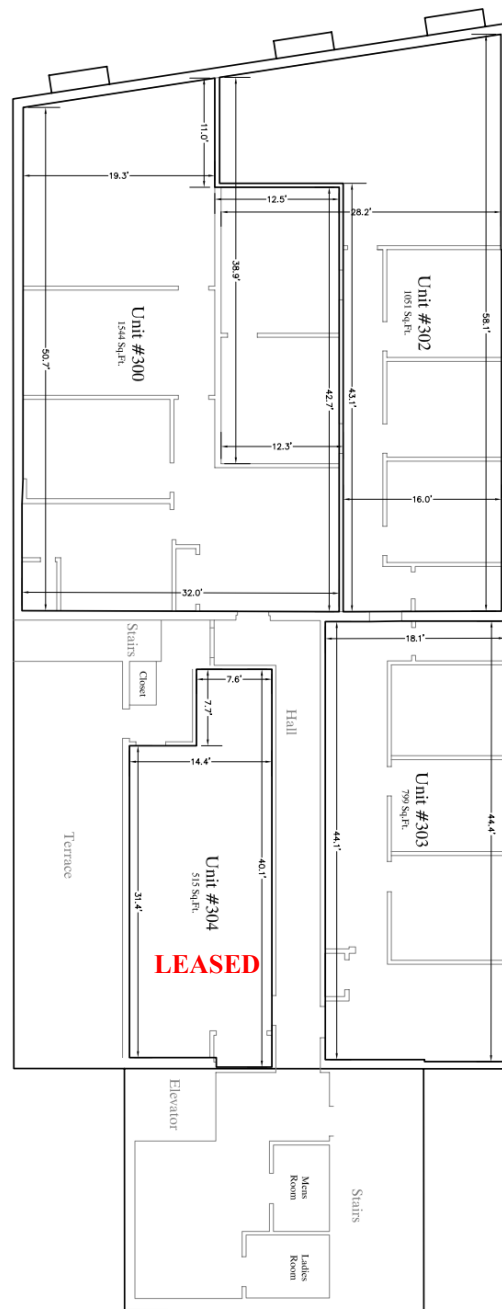
**Joe Dimyan**  
203.313-3920  
jdimyan@towercorp.com

~ 3rd FLOOR FLOORPLAN ~

30 BRIDGE STREET,  
NEW MILFORD, CT



TOWER REALTY CORP.



**Mick Consalvo**  
203.241-5188  
mconsalvo@towercorp.com



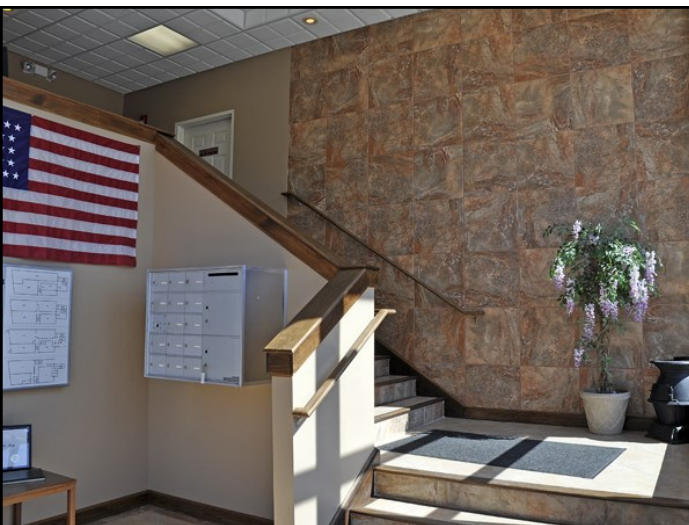
**Joe Dimyan**  
203.313-3920  
jdimyan@towercorp.com



*~ ADDITIONAL PHOTOS ~*

30 BRIDGE STREET,  
NEW MILFORD, CT

**TRC**  
TOWER REALTY CORP.



**Mick Consalvo**  
203.241-5188  
mconsalvo@towercorp.com



**Joe Dimyan**  
203.313-3920  
jdimyan@towercorp.com

Tower Realty Corp. / 246 Federal Rd., Suite D26, Brookfield, CT 06804 / [www.towercorp.com](http://www.towercorp.com)  
203-775-5000 Office / 203-546-7793 Fax



*~ LOCATION MAP ~*

30 BRIDGE STREET,  
NEW MILFORD, CT

**TRC**  
TOWER REALTY CORP.



**Mick Consalvo**  
203.241-5188  
mconsalvo@towercorp.com



**Joe Dimyan**  
203.313-3920  
jdimyan@towercorp.com

Tower Realty Corp. / 246 Federal Rd., Suite D26, Brookfield, CT 06804 / [www.towercorp.com](http://www.towercorp.com)  
203-775-5000 Office / 203-546-7793 Fax