

**~ FOR SALE ~**

**OFFICE CONDOMINIUM  
BROOKFIELD COMMONS**

**246 Federal Road, Unit D22, Brookfield, CT**



<b>Size:</b>	<b>+/- 1,410 Sq. Ft.</b>
<b>Layout:</b>	<b>Reception, five private offices and bath</b>
<b>Zone:</b>	<b>C-1</b>
<b>Year Built:</b>	<b>1986</b>
<b>Heat:</b>	<b>Electric Heat Pump</b>
<b>Cooling:</b>	<b>Central A/C</b>
<b>Utilities:</b>	<b>Well, Sewer</b>
<b>Common Charges:</b>	<b>\$360.25 per month</b>
<b>Taxes:</b>	<b>\$3,105</b>

**Location! Location! Ground Level office space with lots of windows and plenty of parking. Excellent complex convenient to shopping, restaurants and easy access to I-84. Ideal for any professional office or medical use.**



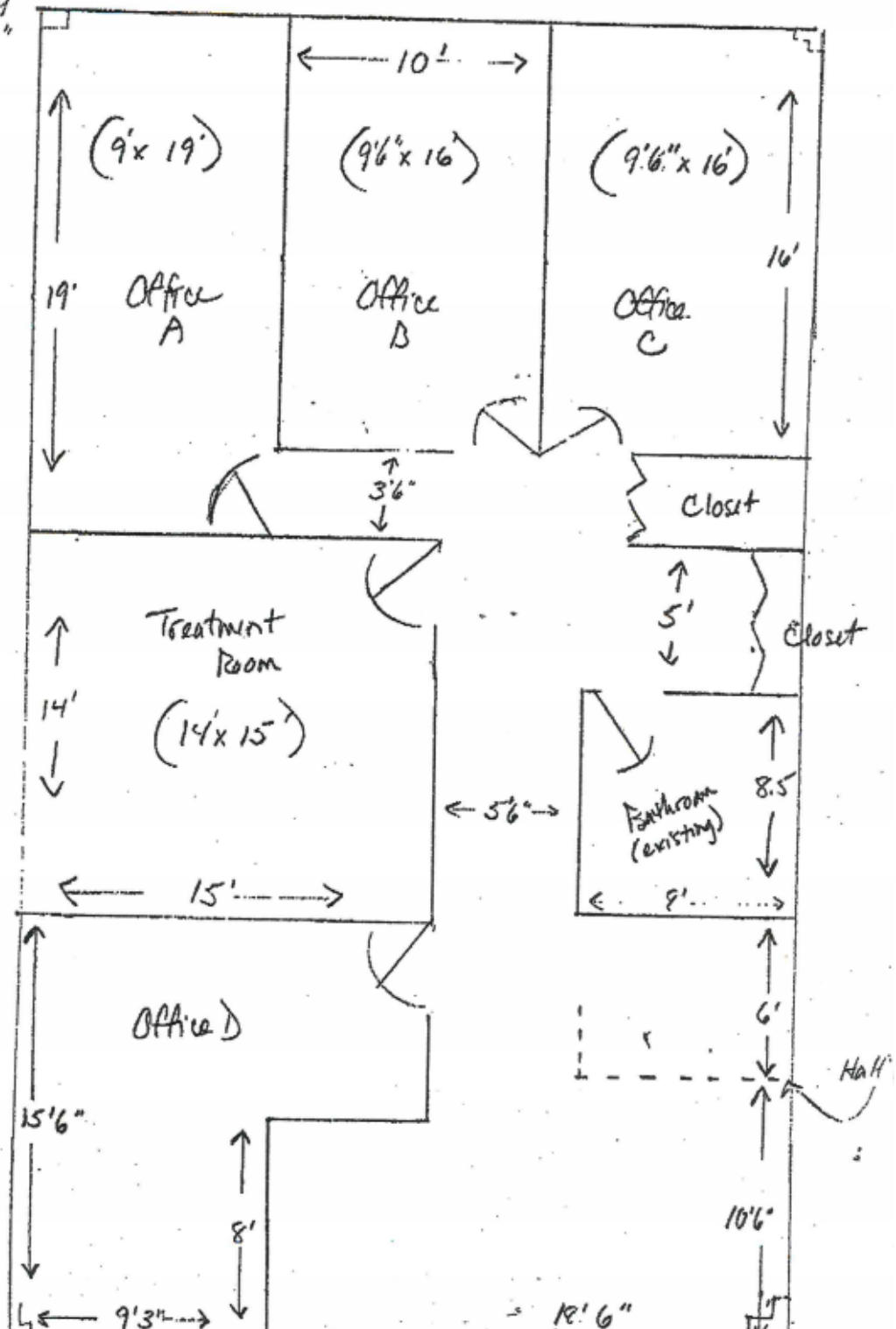
**Mick Consalvo**  
203.241-5188  
mconsalvo@towercorp.com

**Tower Realty Corp. / 246 Federal Rd., Suite D26, Brookfield, CT 06804 / [www.towercorp.com](http://www.towercorp.com)**

No warranty of representation, expressed or implied is made as to the accuracy of the information contained herein, and same is submitted subject to errors, omissions, change of price, rental, sale or other conditions, withdrawal without notice, and to any special listing conditions imposed by our principals.

D-22

Approximately  
28'6" x 48'6"



**Brookfield Commons**  
**246 Federal Road, Brookfield, CT**

