

~ FOR LEASE ~  
~INDUSTRIAL SPACE ~

**3 PRODUCTION DRIVE,  
BROOKFIELD, CT**



**TOWER REALTY CORP.**



**3 Production Drive  
Brookfield, CT**

**Great industrial complex in excellent location  
with easy access to Rt. 7 and I84.  
High ceilings, offices, loading docks and drive in  
door. Ideal for warehouse, assembly or light  
manufacturing.**

|                 |  |
|-----------------|--|
| Size:           | +/- 7,320 Sq. Ft. with 1,200 Mezzanine Storage |
| Zone:           | C-GN   |
| Loading:        | 2 Loading docks, 1 drive in ramp               |
| Heat:           | Gas  |
| Ceiling Height: | 20 Feet  |
| Power:          | 200 Amp, 3Phase                                |
| Bathrooms:      | 1 Handicap Bathroom                            |
| Year Built:     | 2006   |
| Lease Price:    | \$7.25 NNN                                     |



**Mick Consalvo**  
203.241-5188  
mconsalvo@towercorp.com

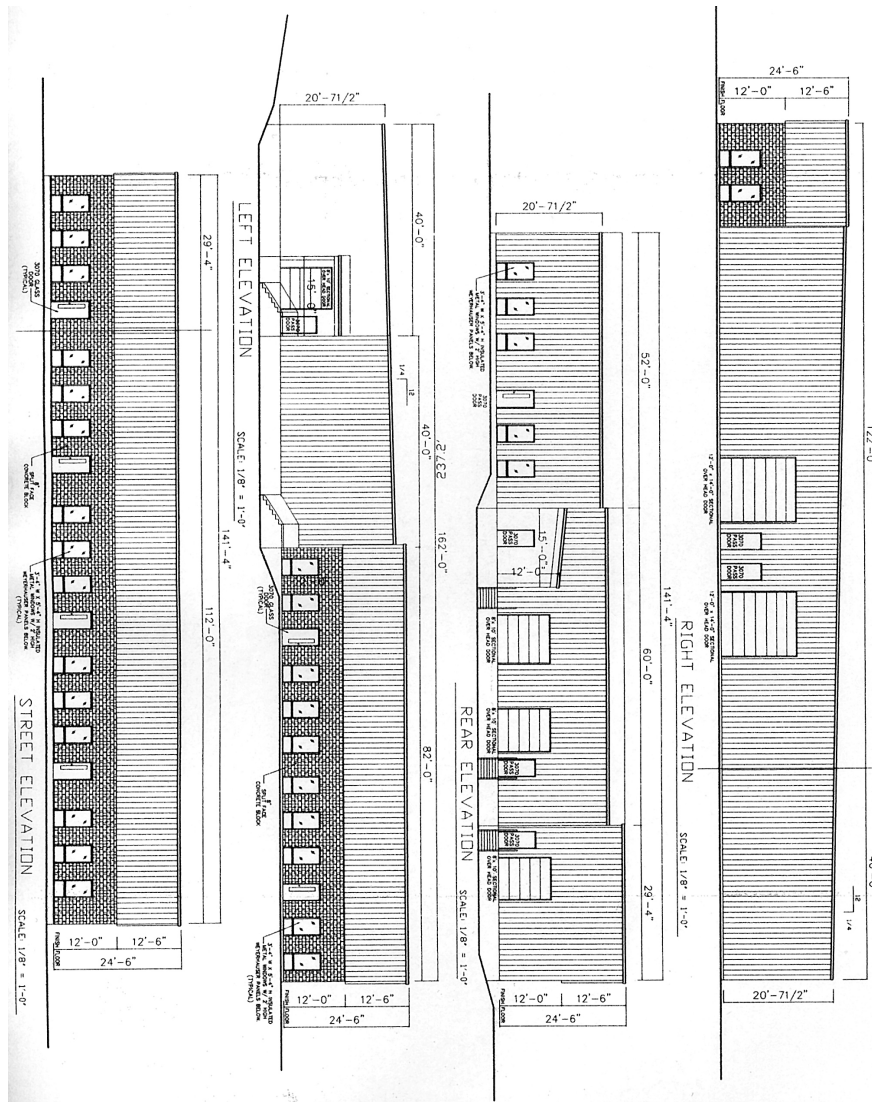


**Michael Dimyan**  
203.948-2891  
mdimyan@towercorp.com

**Tower Realty Corp. / 246 Federal Rd., Suite D26, Brookfield, CT 06804 / [www.towercorp.com](http://www.towercorp.com)**

No warranty of representation, expressed or implied is made as to the accuracy of the information contained herein, and same is submitted subject to errors, omissions, change of price, rental, sale or other conditions, withdrawal without notice, and to any special listing conditions imposed by our principals.

~ *Layout* ~



**Mick Consalvo**  
203.241-5188  
mconsalvo@towercorp.com



**Michael Dimyan**  
203.948-2891  
mdimyan@towercorp.com

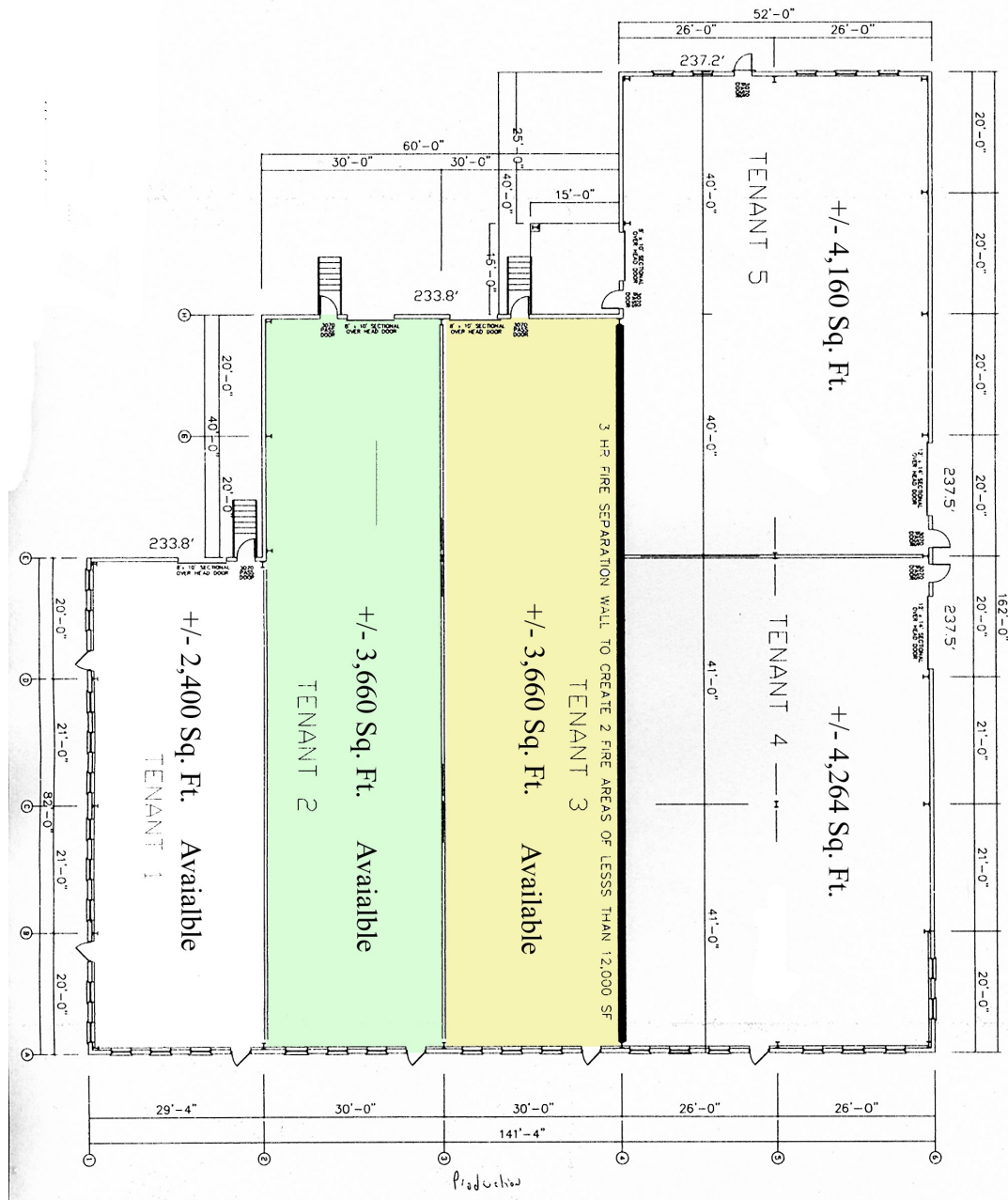
Tower Realty Corp. / 246 Federal Rd., Suite D26, Brookfield, CT 06804 / [www.towercorp.com](http://www.towercorp.com)

No warranty of representation, expressed or implied is made as to the accuracy of the information contained herein, and same is submitted subject to errors, omissions, change of price, rental, sale or other conditions, withdrawal without notice, and to any special listing conditions imposed by our principals.

~ Layout ~



TOWER REALTY CORP.



**Mick Consalvo**  
203.241-5188  
mconsalvo@towercorp.com



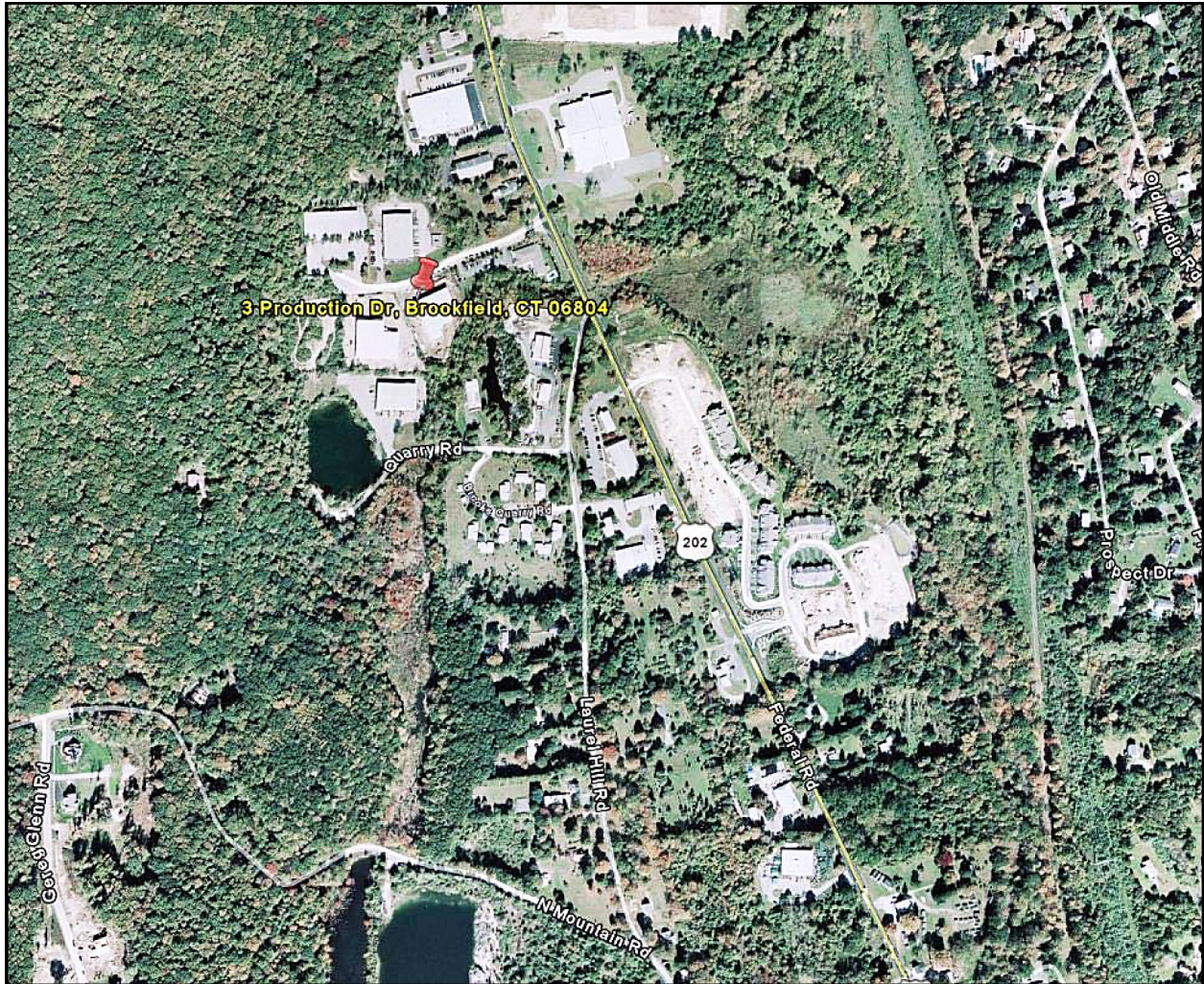
**Michael Dimyan**  
203.948-2891  
mdimyan@towercorp.com

Tower Realty Corp. / 246 Federal Rd., Suite D26, Brookfield, CT 06804 / [www.towercorp.com](http://www.towercorp.com)

No warranty of representation, expressed or implied is made as to the accuracy of the information contained herein, and same is submitted subject to errors, omissions, change of price, rental, sale or other conditions, withdrawal without notice, and to any special listing conditions imposed by our principals.



~ Aerial View ~



**Mick Consalvo**  
203.241-5188  
mconsalvo@towercorp.com



**Michael Dimyan**  
203.948-2891  
mdimyan@towercorp.com

Tower Realty Corp. / 246 Federal Rd., Suite D26, Brookfield, CT 06804 / [www.towercorp.com](http://www.towercorp.com)

No warranty of representation, expressed or implied is made as to the accuracy of the information contained herein, and same is submitted subject to errors, omissions, change of price, rental, sale or other conditions, withdrawal without notice, and to any special listing conditions imposed by our principals.