



TOWER REALTY CORP.

SPECIALISTS IN COMMERCIAL AND INDUSTRIAL REAL ESTATE

*~ FOR LEASE ~
OFFICE SPACE
BROOKFIELD COMMONS*



246 Federal Road, Unit D22, Brookfield, CT



Size:	+/- 1,410 Sq. Ft.
Layout:	Reception, five private offices and bath
Zone:	C-1
Year Built:	1986
Heat:	Electric Heat Pump
Cooling:	Central A/C
Utilities:	Well, Sewer
Lease Price:	\$10.00 NNN

Location! Location! Ground Level office space with lots of windows and plenty of parking. Excellent complex convenient to shopping, restaurants and easy access to I-84. Ideal for any professional office or medical use.



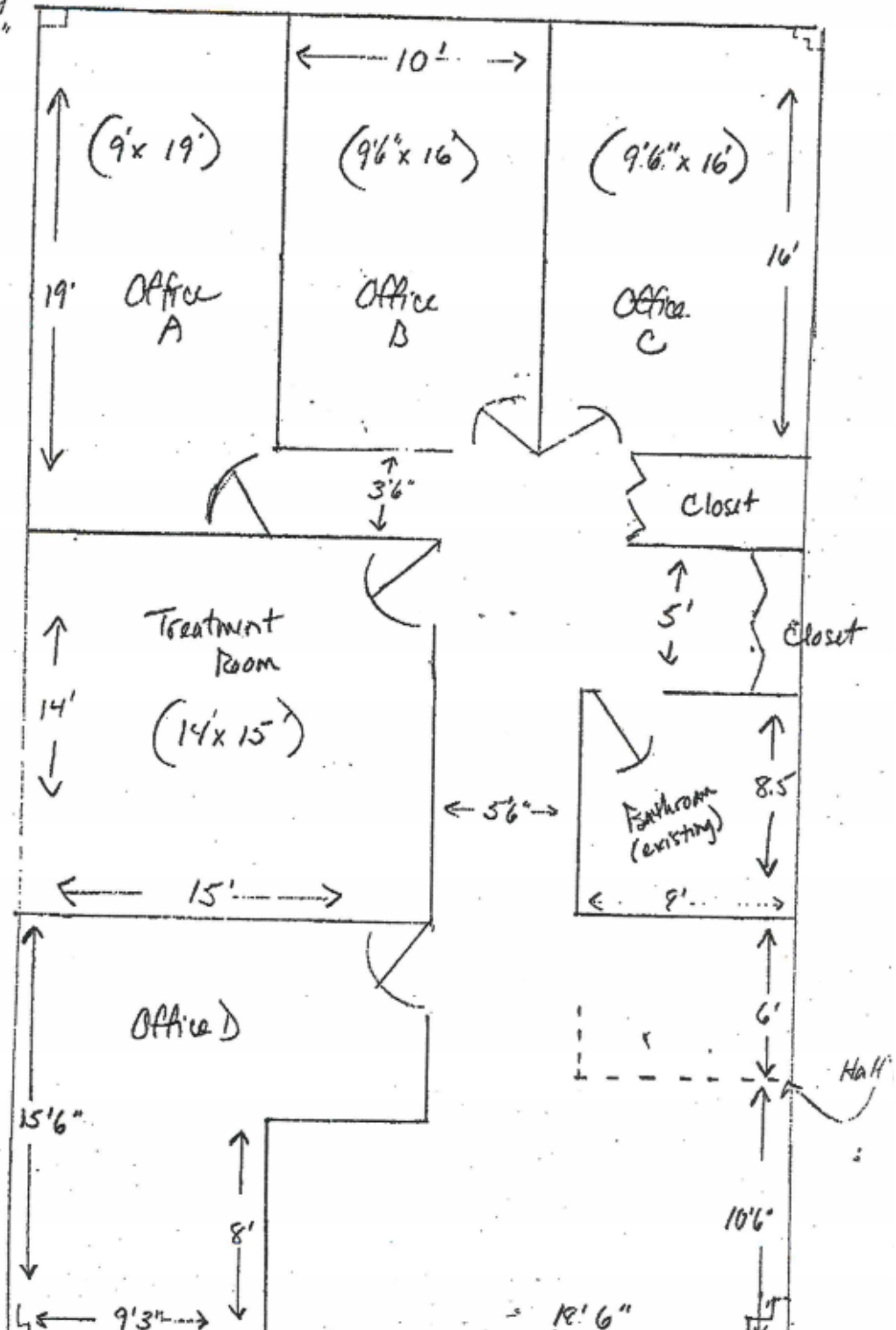
Mick Consalvo
203.241-5188
mconsalvo@towercorp.com

Tower Realty Corp. / 246 Federal Rd., Suite D26, Brookfield, CT 06804 / www.towercorp.com

No warranty of representation, expressed or implied is made as to the accuracy of the information contained herein, and same is submitted subject to errors, omissions, change of price, rental, sale or other conditions, withdrawal without notice, and to any special listing conditions imposed by our principals.

D-22

Approximately
28'6" x 48'6"



Brookfield Commons
246 Federal Road, Brookfield, CT

