

~ **FOR LEASE** ~

**OFFICE or RETAIL SPACE**



**TOWER REALTY CORP.**



**11 Stony Hill Road, (RT. 6)  
Bethel, CT**

**Lease Price: \$1,500 + Utilities**

Ideal Route 6 office or retail location with easy access to I-84!  
Former personal training space with great parking, open floor  
plan and Rt. 6 signage .

Sizes:	+/- 1,600 Sq Ft
Zoning:	CI (Retail/Office)
Plumbing:	2 Bathrooms
Cooling:	Wall Unit A/C
Heating:	Electric
Utilities:	City Water and Sewer



**Mick Consalvo**  
203.241-5188  
mconsalvo@towercorp.com



**Joe Dimyan**  
203.313-3920  
jdimyan@towercorp.com

**Tower Realty Corp. / 246 Federal Rd., Suite D26, Brookfield, CT 06804 / [www.towercorp.com](http://www.towercorp.com)  
203-775-5000 Office / 203-546-7793 Fax**

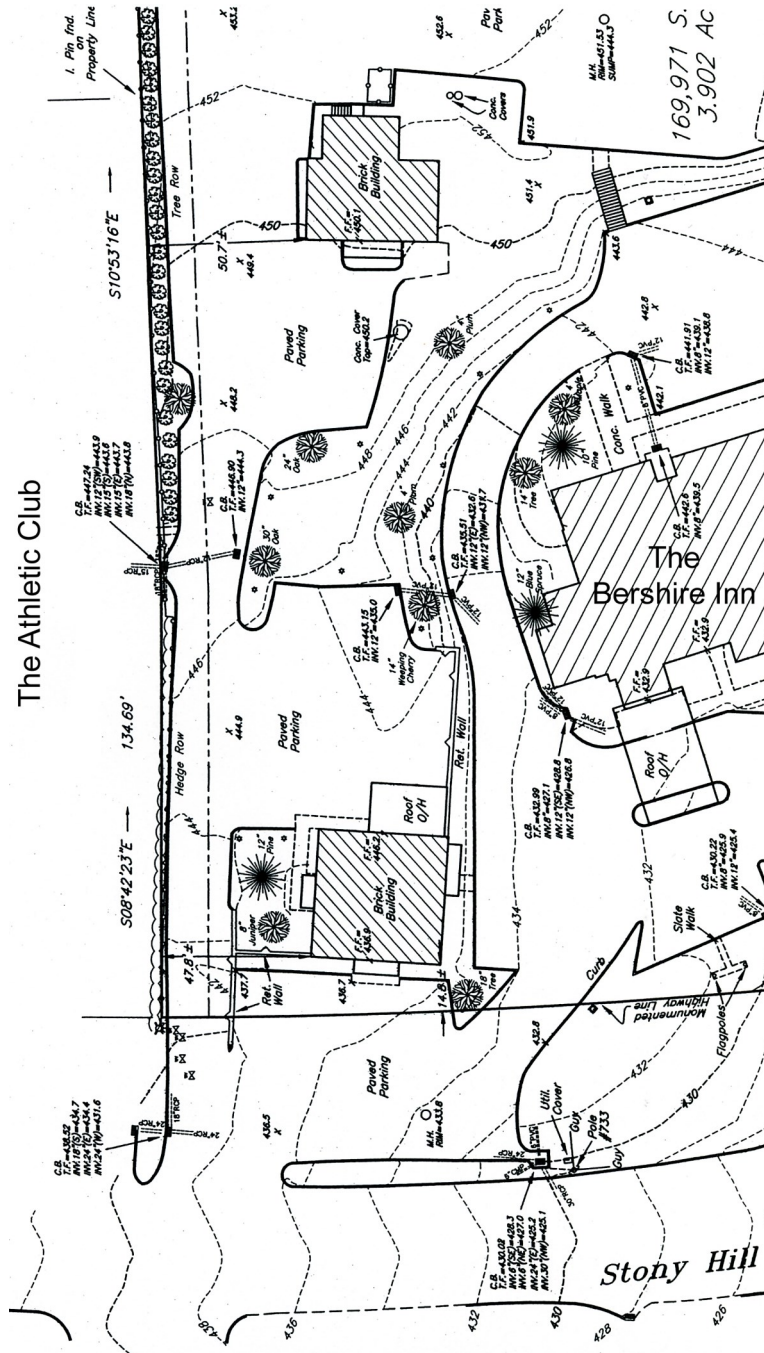
No warranty of representation, expressed or implied is made as to the accuracy of the information contained herein, and same is submitted subject to errors, omissions, change of price, rental, sale or other conditions, withdrawal without notice, and to any special listing conditions imposed by our principals.

## PLOT MAP

11 STONY HILL ROAD  
BETHEL, CT



TOWER REALTY CORP.



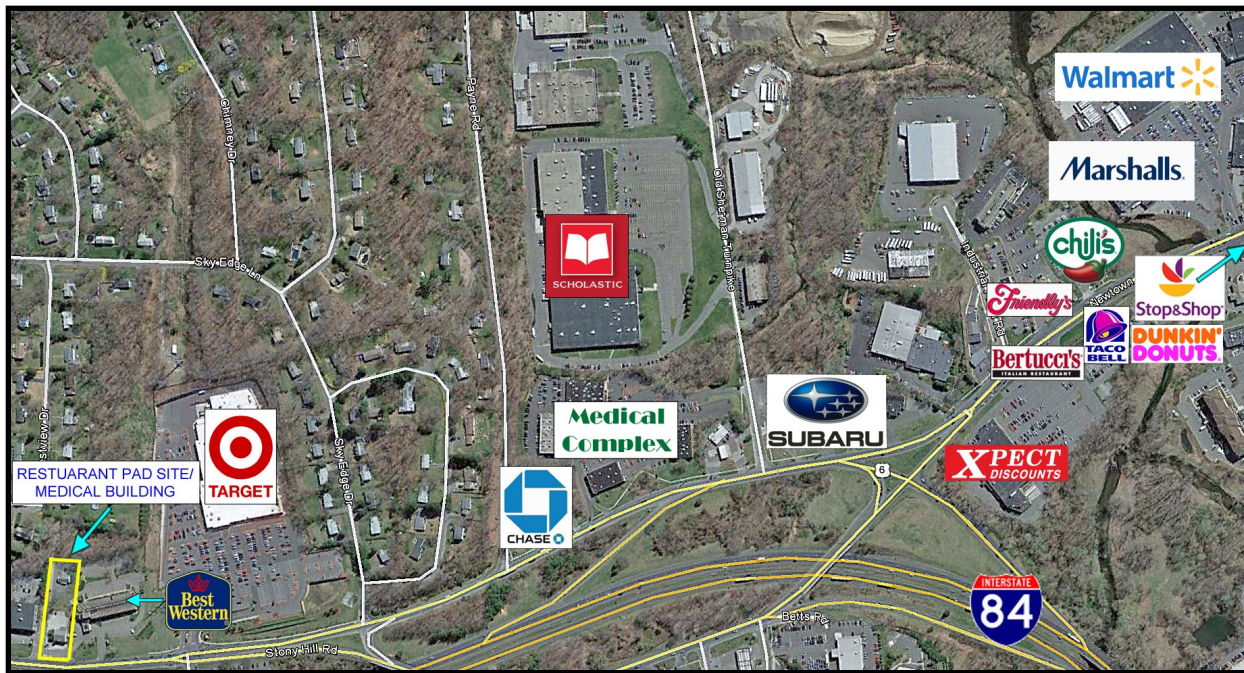


## LOCATION MAPS

11 STONY HILL ROAD  
BETHEL, CT



TOWER REALTY CORP.



**Mick Consalvo**  
203.241-5188  
mconsalvo@towercorp.com



**Joe Dimyan**  
203.313-3920  
jdimyan@towercorp.com

Tower Realty Corp. / 246 Federal Rd., Suite D26, Brookfield, CT 06804 / [www.towercorp.com](http://www.towercorp.com)  
203-775-5000 Office / 203-546-7793 Fax

No warranty of representation, expressed or implied is made as to the accuracy of the information contained herein, and same is submitted subject to errors, omissions, change of price, rental, sale or other conditions, withdrawal without notice, and to any special listing conditions imposed by our principals.