

~ **FOR LEASE** ~

OFFICE or RETAIL SPACE



TOWER REALTY CORP.



**11 Stony Hill Road, (RT. 6)
Bethel, CT**

Lease Price: \$800 + Utilities

Ideal Route 6 office or retail location with great visibility , easy access to I-84 and plenty of parking! Be neighbors with Best Western Hotel and Target.

Sizes:	+/- 600 Sq Ft
Zoning:	CI (Retail/Office)
Plumbing:	1 Bathrooms
Heating/Cooling:	Wall Unit
Utilities:	City Water and Sewer



Mick Consalvo
203.241-5188
mconsalvo@towercorp.com



Joe Dimyan
203.313-3920
jdimyan@towercorp.com

**Tower Realty Corp. / 246 Federal Rd., Suite D26, Brookfield, CT 06804 / www.towercorp.com
203-775-5000 Office / 203-546-7793 Fax**

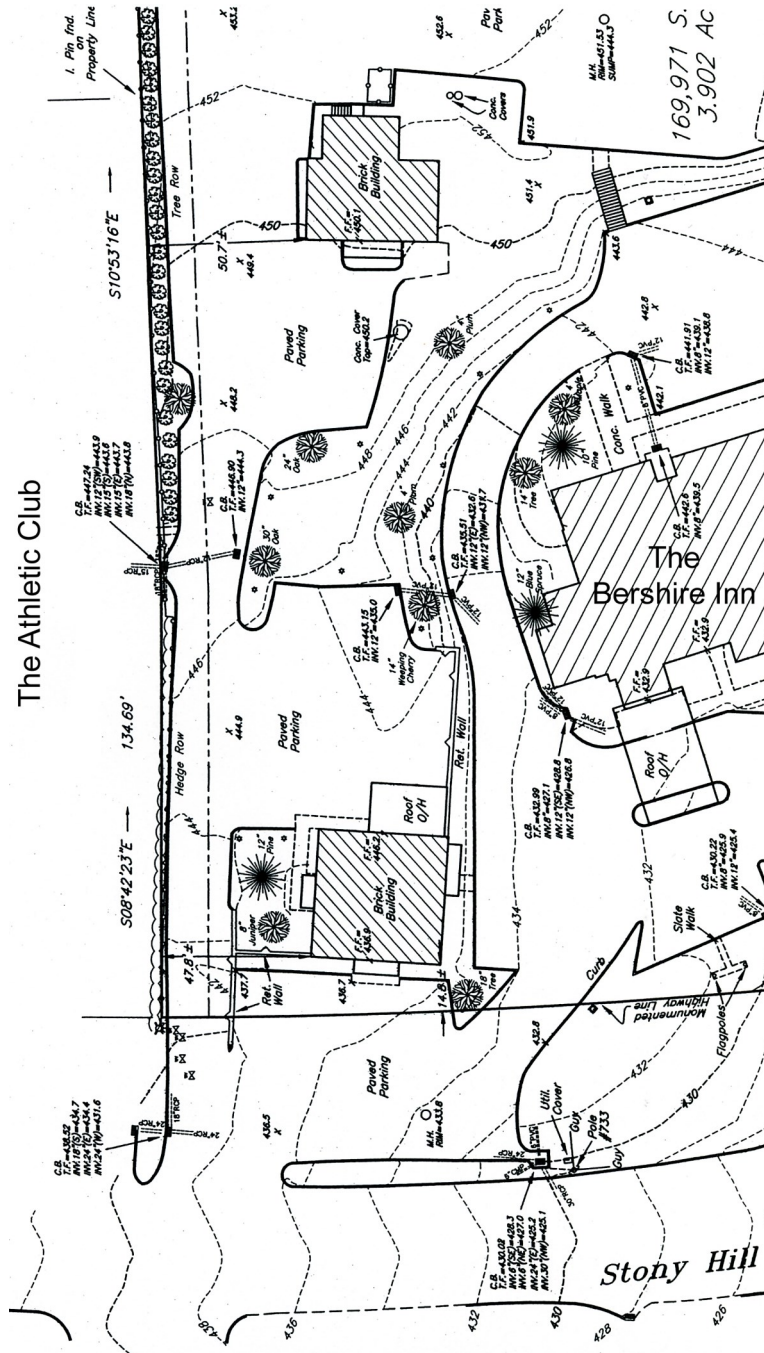
No warranty of representation, expressed or implied is made as to the accuracy of the information contained herein, and same is submitted subject to errors, omissions, change of price, rental, sale or other conditions, withdrawal without notice, and to any special listing conditions imposed by our principals.

PLOT MAP

11 STONY HILL ROAD
BETHEL, CT



TOWER REALTY CORP.



Mick Consalvo
203.241-5188
mconsalvo@towercorp.com



Joe Dimyan
203.313-3920
jdimyan@towercorp.com

Tower Realty Corp. / 246 Federal Rd., Suite D26, Brookfield, CT 06804 / www.towercorp.com
203-775-5000 Office / 203-546-7793 Fax

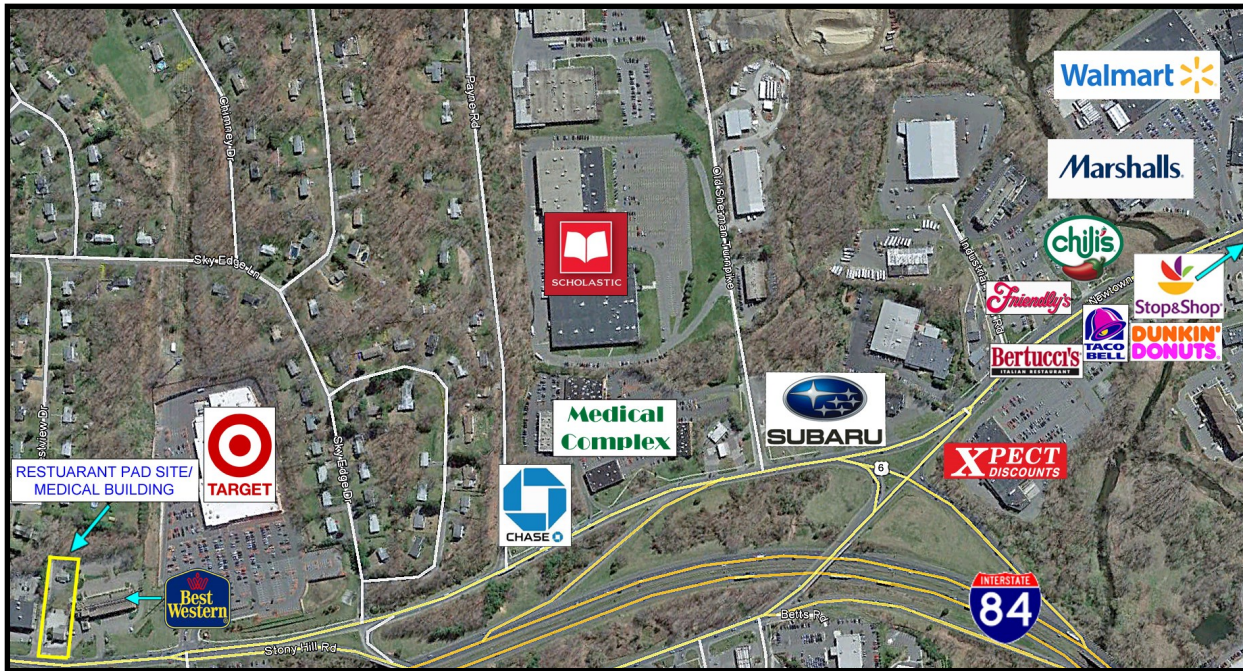
No warranty of representation, expressed or implied is made as to the accuracy of the information contained herein, and same is submitted subject to errors, omissions, change of price, rental, sale or other conditions, withdrawal without notice, and to any special listing conditions imposed by our principals.

LOCATION MAPS

11 STONY HILL ROAD
BETHEL, CT



TOWER REALTY CORP.



Mick Consalvo
203.241-5188
mconsalvo@towercorp.com



Joe Dimyan
203.313-3920
jdimyan@towercorp.com

Tower Realty Corp. / 246 Federal Rd., Suite D26, Brookfield, CT 06804 / www.towercorp.com
203-775-5000 Office / 203-546-7793 Fax

No warranty of representation, expressed or implied is made as to the accuracy of the information contained herein, and same is submitted subject to errors, omissions, change of price, rental, sale or other conditions, withdrawal without notice, and to any special listing conditions imposed by our principals.