

TOWER REALTY CORP.



SPECIALISTS IN COMMERCIAL AND INDUSTRIAL REAL ESTATE

~ FOR LEASE ~
143 WEST STREET, NEW MILFORD, CT
OFFICE SPACE



Available Units:

- Unit 102:** +/- 1,043 Sq. Ft. - Reception and Two Offices
- Unit 110/112** +/- 4,873 Sq. Ft. - Large Bull Pen and Four Private offices.
- Unit 210:** +/- 1,137 Sq. Ft. Open Floor Plan
- Zone:** HRF2 (Commercial)
- Utilities:** City Water; Sewer
- Heating:** Gas Heat
- Cooling:** Central A/C
- Parking:** 5 Spaces for Every 1,000 Sq. Ft.
- Elevator:** Yes
- Boat Slip:** Free with long term lease.
- Lease Prices:**
- Unit 102:** \$1,200 + Utilities
- Unit 110/112:** \$10.00 NNN
- Unit 210:** \$1,000 + Utilities

Historic, fully restored 130,000 SF Historic Mill Building, 1/2 mile south of New Milford town green on the banks of the Housatonic inlet by Lake Lillinonah. Convenient to Routes 7, 202, and 67. Building has 12' operating windows, wood planked floors, natural brick interiors, is internet (cable) ready, fiber optic T1 on site and much more. Must see to fully appreciate. Units may be combined for larger suites.



Mick Consalvo
203.241-5188
mconsalvo@towercorp.com

Tower Realty Corp. / 246 Federal Rd., Suite D26, Brookfield, CT 06804 / www.towercorp.com
203-775-5000 Office / 203-546-7793 Fax

~ PHOTOS ~

143 West Street, Unit 102
Danbury, CT



TOWER REALTY CORP.



Mick Consalvo
203.241-5188
mconsalvo@towercorp.com



Michael Dimyan
203.948-2891
mdimyan@towercorp.com

~ FLOOR PLAN ~

143 West Street
New Milford, CT

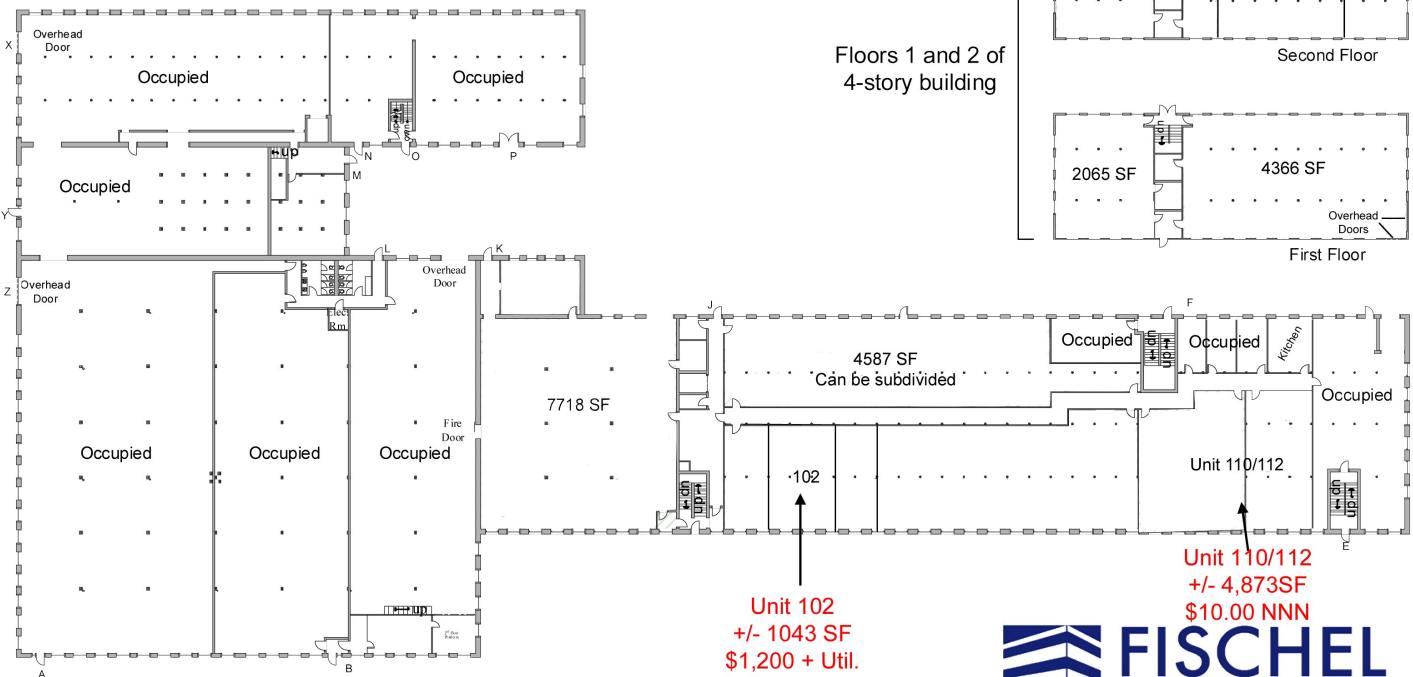


TOWER REALTY CORP.

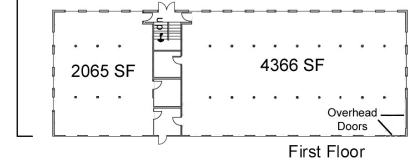
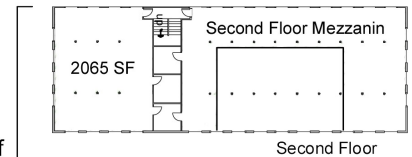
The Bleachery

143 West Street, New Milford First Floor Vacancy

Not to Scale



Floors 1 and 2 of
4-story building



← West Street and
Downtown New Milford

Boat slips on Housatonic River



501 Kings Highway East, Fairfield, CT 06825
Phone: 203-696-1000 Fax: 203-384-8000
www.FischelProperties.com



Mick Consalvo
203.241-5188
mconsalvo@towercorp.com



Michael Dimyan
203.948-2891
mdimyan@towercorp.com

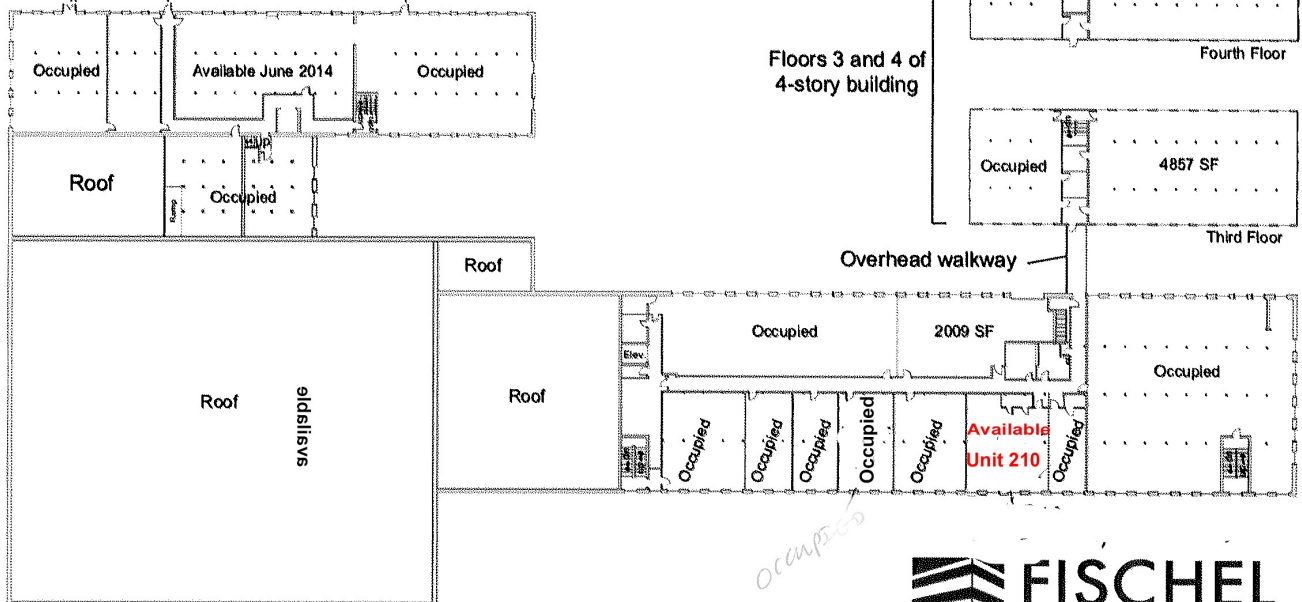
The Bleachery

143 West Street, New Milford

Second Floor

Not to Scale

 Available Space



← West Street and
Downtown New Milford

Boat slips on Housatonic River



501 Kings Highway East, Fairfield, CT 06825
Phone: 203-696-1000 Fax: 203-384-8000
www.FischelProperties.com

~ LOCATION MAP ~

143 West Street
New Milford , CT



TOWER REALTY CORP.



Mick Consalvo
203.241-5188
mconsalvo@towercorp.com



Michael Dimyan
203.948-2891
mdimyan@towercorp.com