

~ **FOR LEASE** ~

**FIRST FLOOR OFFICE/LAB or FLEX SPACE
WITH ACCESS TO DRIVE-IN DOOR**



TOWER REALTY CORP.



**6 Trowbridge Drive, Unit 1B
Bethel, CT**

Lease Price: \$10.00 NNN

Clean and bright first floor office space with many windows and great parking. Building located in Francis J. Clarke Business Center. Ideal for any professional office, lab or flex space. NNN = +/- \$4.00

Size:	+/- 6,250 Sq. Ft.
Floor plans:	Private Offices with Windows, Large Bull Pen Area, Conference Room and Kitchen
Loading:	Shared Access to Drive-In Door
Year Built:	1988
Zone:	IP (Prof. Office/Industrial)
Utilities:	City Water, Sewer and Gas
Heating:	Gas Heat
Cooling:	Central A/C
Sprinklers:	Yes



Mick Consalvo
Tower Realty Corp.
203-775-5000 Office
203-241-5188 Cell
203-546-7793 Fax
mconsalvo@towercorp.com



Tower Realty Corp. / 246 Federal Rd., Suite D26, Brookfield, CT 06804 / www.towercorp.com

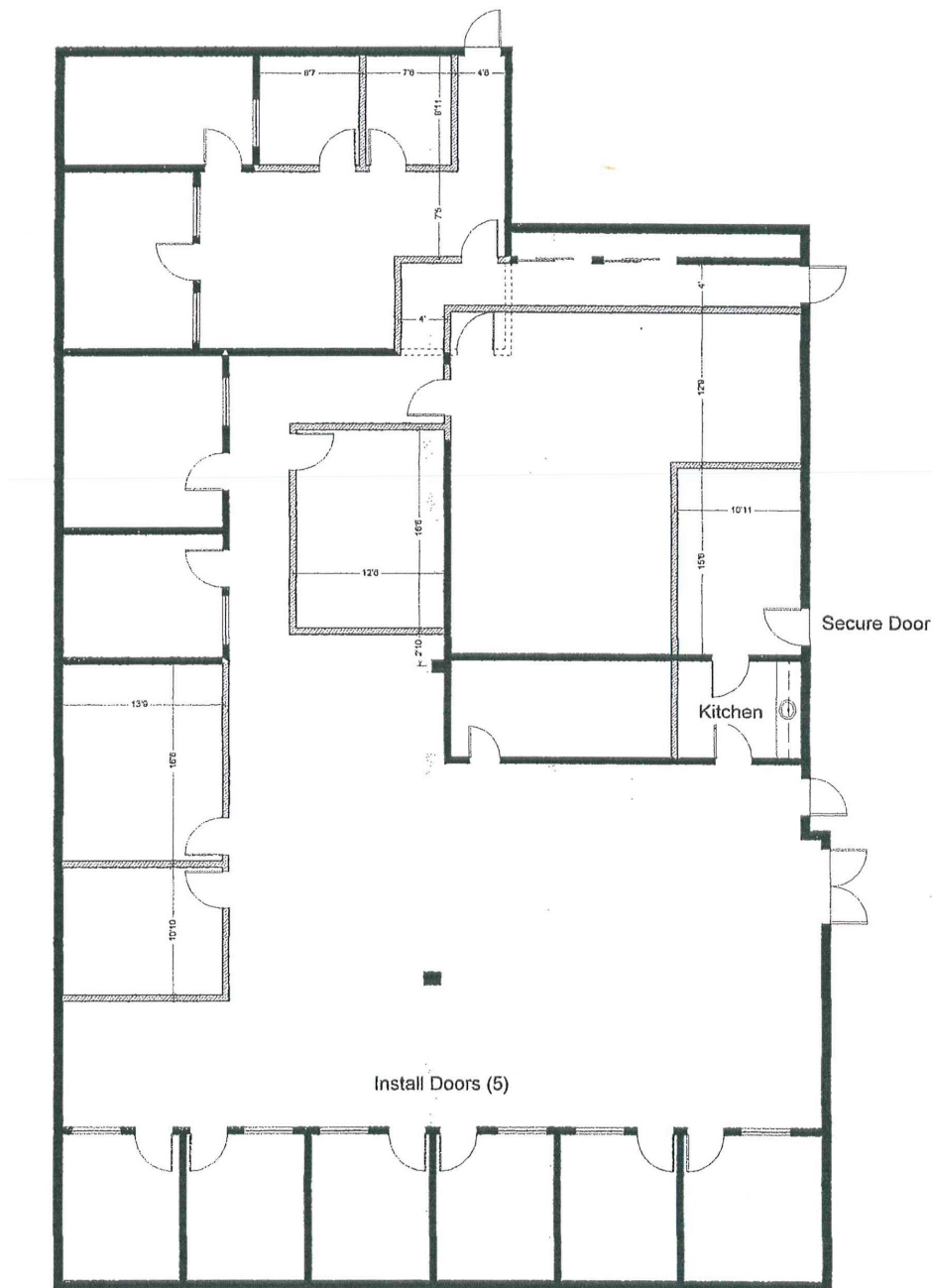
No warranty of representation, expressed or implied is made as to the accuracy of the information contained herein, and same is submitted subject to errors, omissions, change of price, rental, sale or other conditions, withdrawal without notice, and to any special listing conditions imposed by our principals.

~ FLOOR PLAN ~

6 TROWBRIDGE DRIVE, UNIT 1B
BETHEL, CT



TOWER REALTY CORP.



Mick Consalvo
203.241-5188
mconsalvo@towercorp.com

Tower Realty Corp. / 246 Federal Rd., Suite D26, Brookfield, CT 06804 / www.towercorp.com
203-775-5000 Office / 203-546-7793 Fax

~ LOCATION MAPS ~

6 TROWBRIDGE DRIVE,
BETHEL, CT



Mick Consalvo
203.241-5188
mconsalvo@towercorp.com