

~ FOR SALE ~

**RESIDENTIAL LAND**



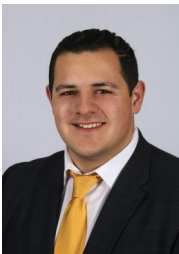
**Grassy Hill Road,  
Woodbury, CT**

**Reduced**

**Sale Price: \$95,000 Each Lot  
\$264,900 Combined**

Ideal residential property approved on 5.9 acres. This site is approved for two 4-bedrooms homes & one 3-bedroom home. Level land with beautiful views. Build your dream home! Property is perfect

Size Options:	
Plot 39B:	+/- 2.06 Acres
Plot 39C:	+/- 1.75 Acres
Plot 39D:	+/- 2.13 Acres
Combined:	+/- 5.94 Acres
Zone:	OS80 (Residential)
Utilities:	Septic and Well
Current Taxes:	
Plot 39B:	\$1,883 Yearly
Plot 39C:	\$1,825 Yearly
Plot 39D:	\$1,893 Yearly
Combined:	\$5,601 Yearly



**Joe Dimyan**  
203.313-3920  
jdimyan@towercorp.com



**Michael Dimyan**  
203.948-2891  
mdimyan@towercorp.com

Tower Realty Corp. / 246 Federal Rd., Suite D26, Brookfield, CT 06804 / [www.towercorp.com](http://www.towercorp.com)  
203-775-5000 Office / 203-546-7793 Fax

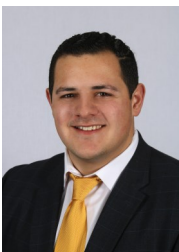
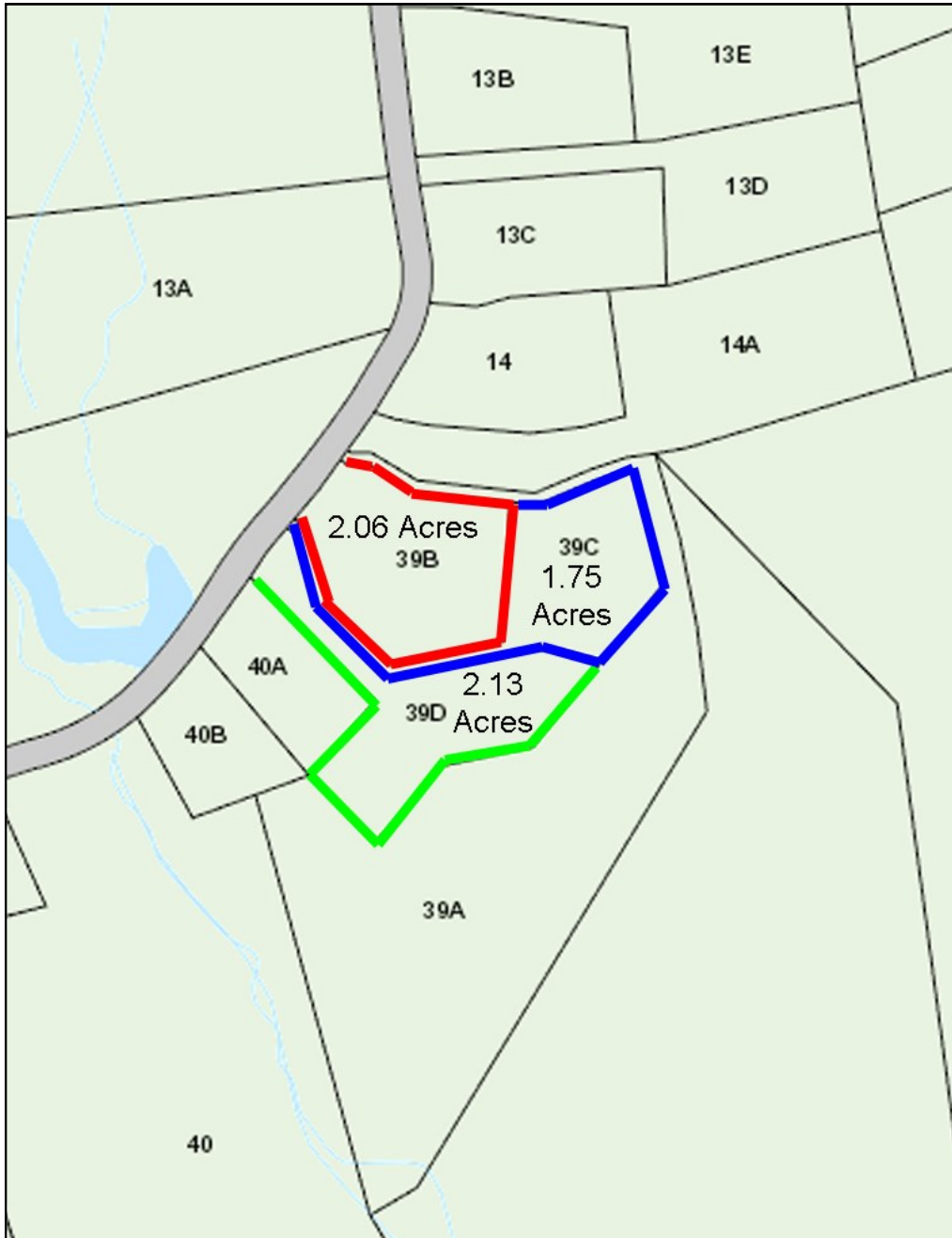
No warranty of representation, expressed or implied is made as to the accuracy of the information contained herein, and same is submitted subject to errors, omissions, change of price, rental, sale or other conditions, withdrawal without notice, and to any special listing conditions imposed by our principals.

~ CIS MAP ~

GRASSY HILL ROAD  
WOODBURY, CT



TOWER REALTY CORP.



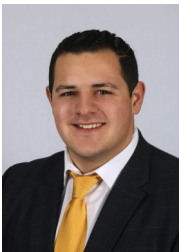
**Joe Dimyan**  
203.313-3920  
jdimyan@towercorp.com



**Michael Dimyan**  
203.948-2891  
mdimyan@towercorp.com

~ SITE PLAN ~

GRASSY HILL ROAD  
WOODBURY, CT



**Joe Dimyan**  
203.313-3920  
jdimyan@towercorp.com



**Michael Dimyan**  
203.948-2891  
mdimyan@towercorp.com