

~ FOR LEASE ~

**OFFICE or FLEX SPACE
BERKSHIRE CORPORATE PARK**



**15 Berkshire Blvd., Suite B
Bethel, CT**

Lease: Price: \$1,500 + Util.

1,830 Sq. Ft. of bright and clean office space with 3 private offices, bullpen, private bath and kitchenette. Be neighbors with Duracell, Linde, Amica Insurance, Memry Corporation, and many more. Great location right off exit 8 of I-84 and easily accessible from Danbury, Bethel or Brookfield.

Size	+/- 1,830 Sq. Ft.
Zone:	IP (Commercial)
Layout:	Three Private Offices, Bullpen Area, Private Bath and Kitchenette.
Year Built:	1975
Ceiling height:	12 Ft.
Plumbing:	One Bath
Heating:	Gas Heat
Cooling:	Central A/C
Utilities:	City Water and Sewer



Mick Consalvo
203.241-5188
mconsalvo@towercorp.com



Michael Dimyan
203.948-2891
mdimyan@towercorp.com

Tower Realty Corp. / 246 Federal Rd., Suite D26, Brookfield, CT 06804 / www.towercorp.com
203-775-5000 Office / 203-546-7793 Fax

No warranty of representation, expressed or implied is made as to the accuracy of the information contained herein, and same is submitted subject to errors, omissions, change of price, rental, sale or other conditions, withdrawal without notice, and to any special listing conditions imposed by our principals.

~ *ADDITIONAL PHOTOS* ~

15 BERKSHIRE BLVD., SUITE B
BETHEL, CT



TOWER REALTY CORP.



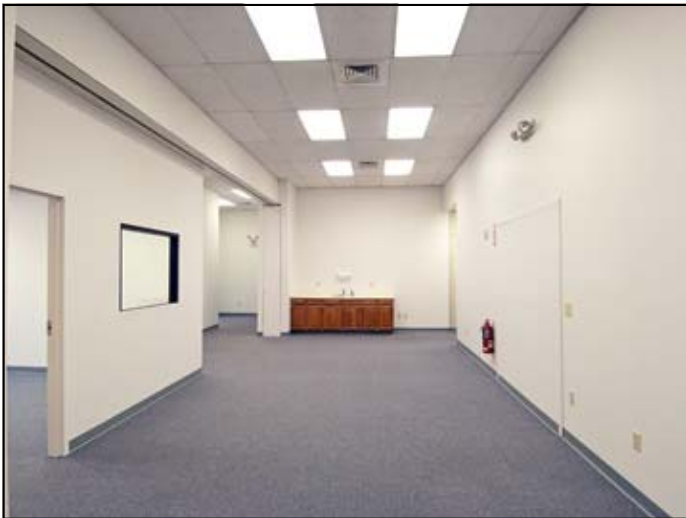
Mick Consalvo
203.241-5188
mconsalvo@towercorp.com



Michael Dimyan
203.948-2891
mdimyan@towercorp.com

~ *ADDITIONAL PHOTOS* ~

15 BERKSHIRE BLVD., SUITE B
BETHEL, CT



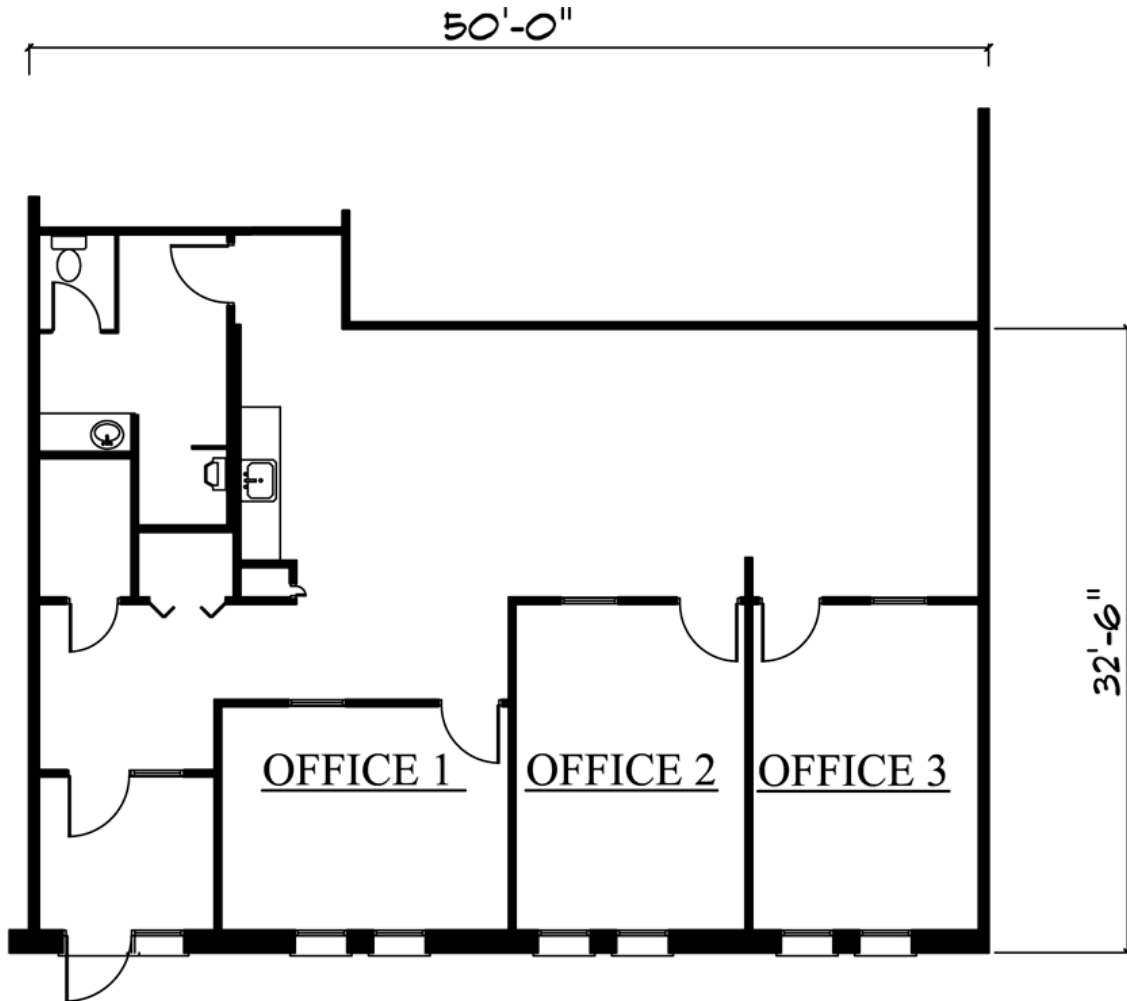
Mick Consalvo
203.241-5188
mconsalvo@towercorp.com



Michael Dimyan
203.948-2891
mdimyan@towercorp.com

~ LAYOUT ~

15 BERKSHIRE BLVD., SUITE B
BETHEL, CT



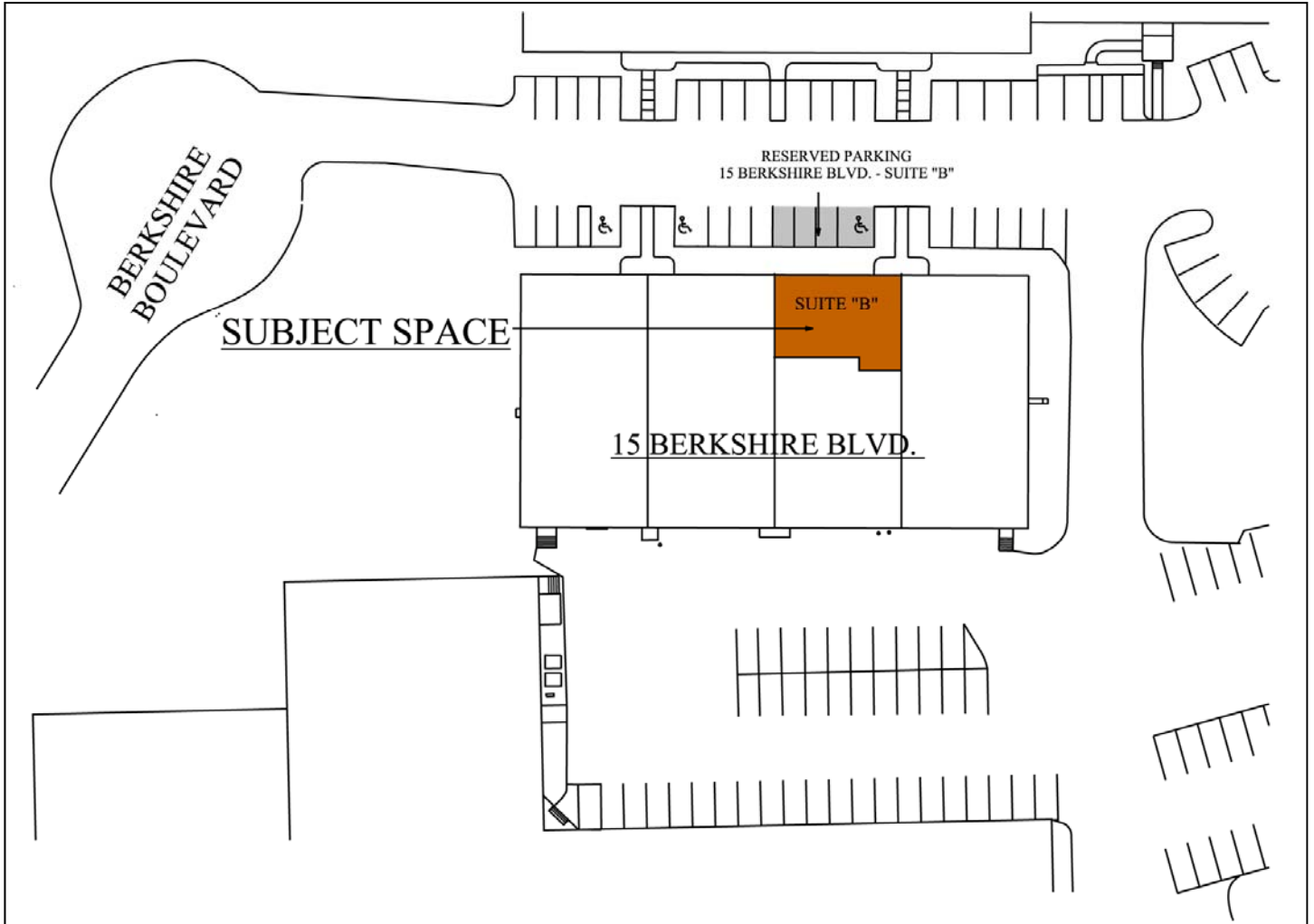
Mick Consalvo
203.241-5188
mconsalvo@towercorp.com



Michael Dimyan
203.948-2891
mdimyan@towercorp.com

~ SITE PLAN ~

15 BERKSHIRE BLVD.,
BETHEL, CT



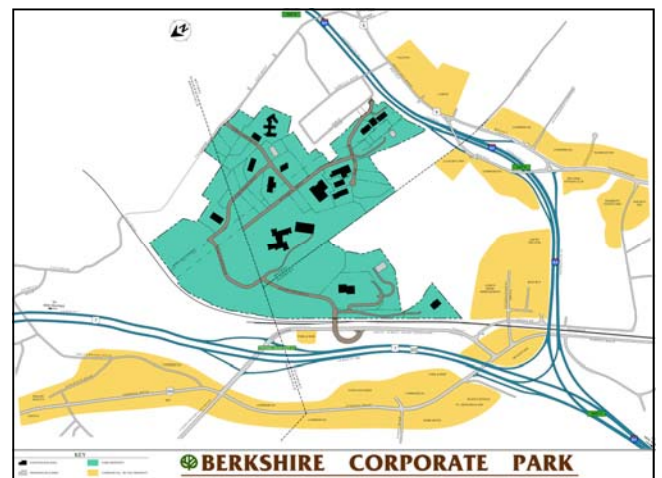
Mick Consalvo
203.241-5188
mconsalvo@towercorp.com



Michael Dimyan
203.948-2891
mdimyan@towercorp.com

~ LOCATION MAP ~

15 BERKSHIRE BLVD.,
BETHEL, CT



Mick Consalvo
203.241-5188
mconsalvo@towercorp.com



Michael Dimyan
203.948-2891
mdimyan@towercorp.com