

~ FOR LEASE ~



TOWER REALTY CORP.

FIRST FLOOR MEDICAL/PROFESSIONAL OFFICE SPACE



**940 Federal Road, Unit 1A
Brookfield, CT**

Lease Price: \$12.00 NNN Price Reduced!

First floor medical space on Route 7 in Brookfield with easy access to I-84. Building sits on level 2.8 acres with +/- 45-car parking. Ideal for any professional office use.

Size: +/- 1,600 to 3,200 Sq. Ft.
Layout: Waiting Room, 3 Private Offices, Nurses' Station, 8 Exam Rooms, X-Ray Room, and IT Closet
Zone: VBD (Village Business District)
Year Built: 1981
Parking: +/- 45-Cars
Utilities: Well; Sewer
Plumbing: 3 Baths
Heating: Electric Heat Pump
Cooling: Central A/C



Mick Consalvo
203.241-5188
mconsalvo@towercorp.com

Tower Realty Corp. / 246 Federal Rd., Suite D26, Brookfield, CT 06804 / www.towercorp.com
203-775-5000 Office / 203-546-7793 Fax

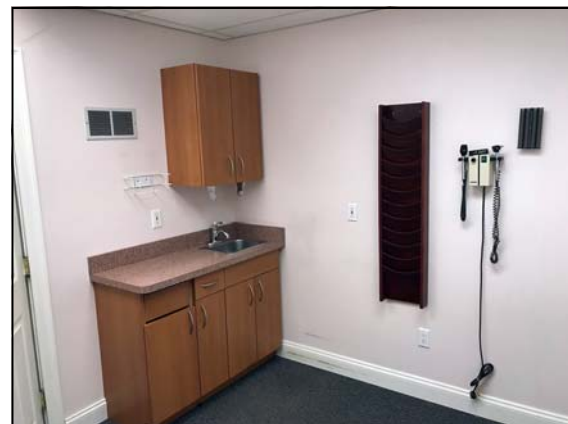
No warranty of representation, expressed or implied is made as to the accuracy of the information contained herein, and same is submitted subject to errors, omissions, change of price, rental, sale or other conditions, withdrawal without notice, and to any special listing conditions imposed by our principals.

ADDITIONAL PHOTOS

940 Federal Road, Unit 1A
Brookfield, CT



TOWER REALTY CORP.



Mick Consalvo
203.241-5188
mconsalvo@towercorp.com

ADDITIONAL PHOTOS

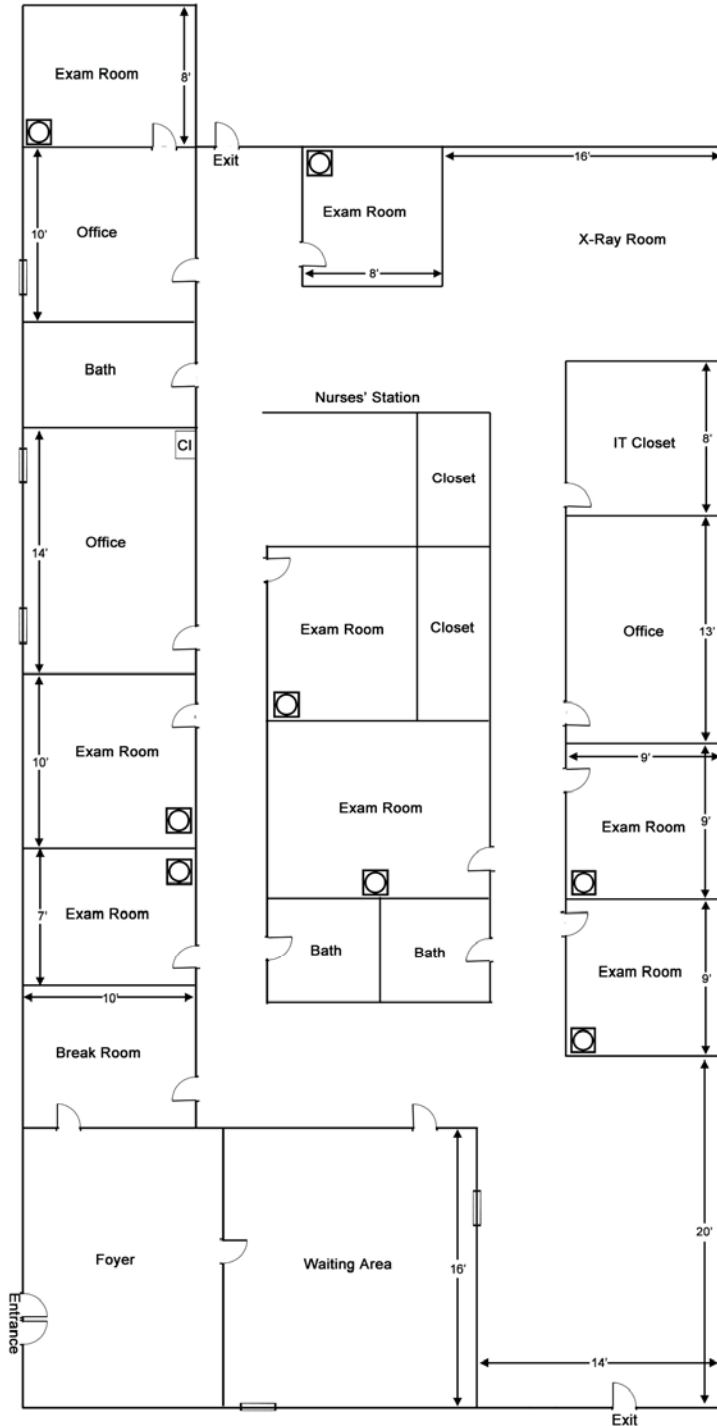
940 Federal Road, Unit 1A
Brookfield, CT



Mick Consalvo
203.241-5188
mconsalvo@towercorp.com

LAYOUT

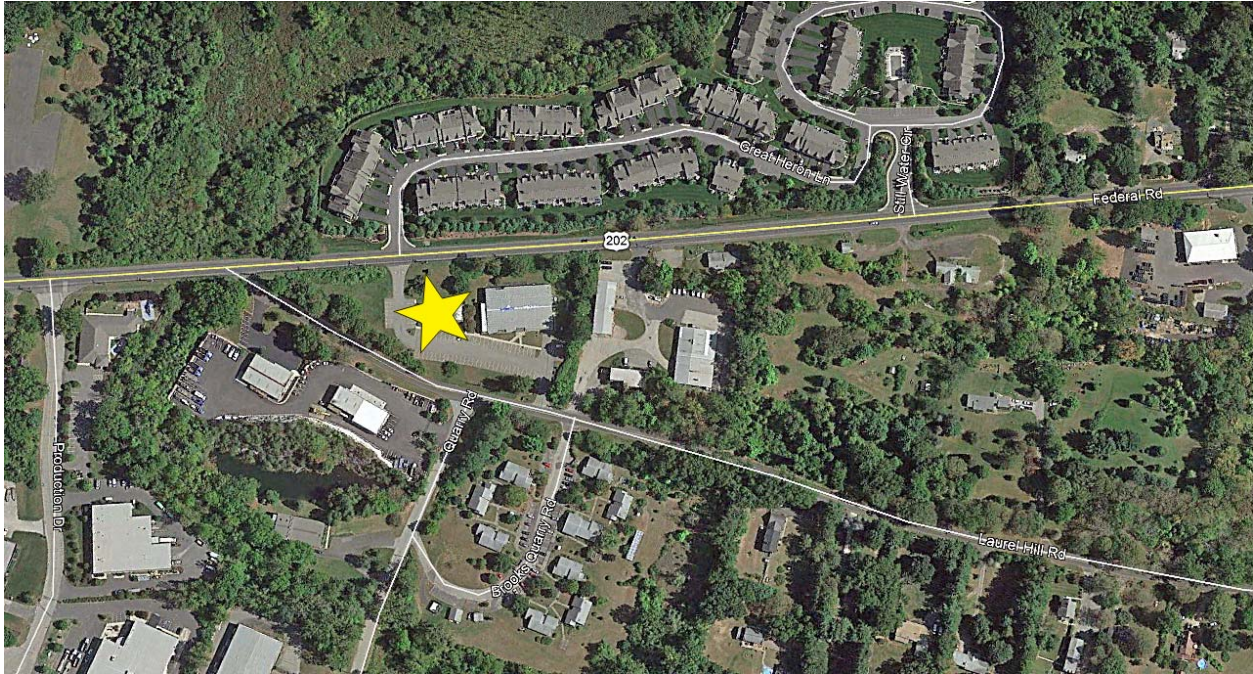
940 Federal Road, Unit 1A
Brookfield, CT



Mick Consalvo
203.241-5188
mconsalvo@towercorp.com

LOCATION MAPS

940 Federal Road, Unit 1A
Brookfield, CT



Mick Consalvo
203.241-5188
mconsalvo@towercorp.com