



TOWER REALTY CORP.

SPECIALISTS IN COMMERCIAL AND INDUSTRIAL REAL ESTATE



**~ FOR LEASE ~
OFFICE SPACE**

300 Federal Road (Route 7), Suite 208, Brookfield, CT



Size:	+/- 1,650 Sq. Ft.
Layout:	Reception, Four Private Offices, Bull Pen Area and Private Bath
Zone:	IRC 80/40 (Commercial)
Year Built:	1973
Parking:	Ample
Heating:	Electric Heat Pump
Cooling:	Wall/Window Units
Utilities:	Well and Sewer
Lease Price:	\$1,500 + Util.

1,650 sq. ft. of office space available in great location just north of Costco. Unit features reception, 4 private offices, bull pen area, private bath, and has new carpet and paint. Building has ample parking and is ideal for any professional office or medical use. May be combined with adjacent unit.



Scan this image with your smart phone to get our latest exclusive listings.

FOR MORE INFORMATION CONTACT

Mick Consalvo
mconsalvo@towercorp.com

Michael Dimyan
mdimyan@towercorp.com

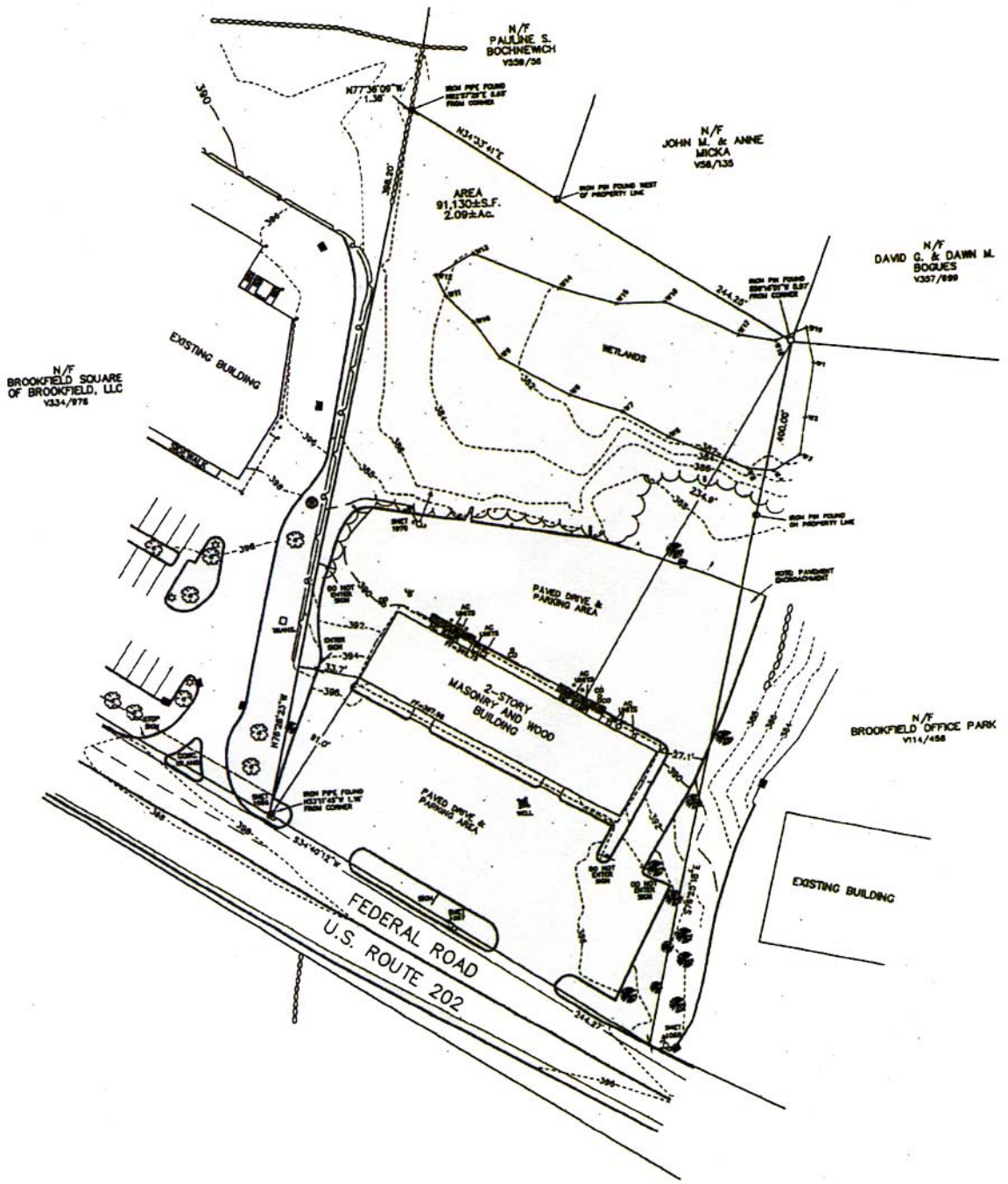
246 Federal Rd. D26 P.O. Box 5242 Brookfield, CT 06804
Tel: (203) 775-5000 • Fax: (203) 775-7199
www.towercorp.com

No warranty of representation, expressed or implied is made as to the accuracy of the information contained herein, and same is submitted subject to errors, omissions, change of price, rental, sale or other conditions, withdrawal without notice, and to any special listing conditions imposed by our principals.



Scan this image with your smart phone to join our VIP email list for market updates and property listings.





300 Federal Road (Route 7), Brookfield, CT

