



TOWER REALTY CORP.

SPECIALISTS IN COMMERCIAL AND INDUSTRIAL REAL ESTATE

~ FOR SALE ~

RETAIL LAND WITH APPROVALS IN PLACE



248 Kent Road (Route 7), New Milford, CT



Size:	+/- 1.96 Acres
Frontage:	125 Ft. on Route 7
Zone:	B-1 (Retail/Office)
Utilities:	Well and Septic
Taxes:	\$5,022 Yearly
Sale Price:	\$249,900

Level Route 7 site with approvals in place for a 4,045 sq. ft. retail and restaurant building. Property is 1.96 acres with 125' of road frontage.



FOR MORE INFORMATION CONTACT

Mick Consalvo
mconsalvo@towercorp.com

246 Federal Rd. D26 P.O. Box 5242 Brookfield, CT 06804
Tel: (203) 775-5000 • Fax: (203) 775-7199
www.towercorp.com

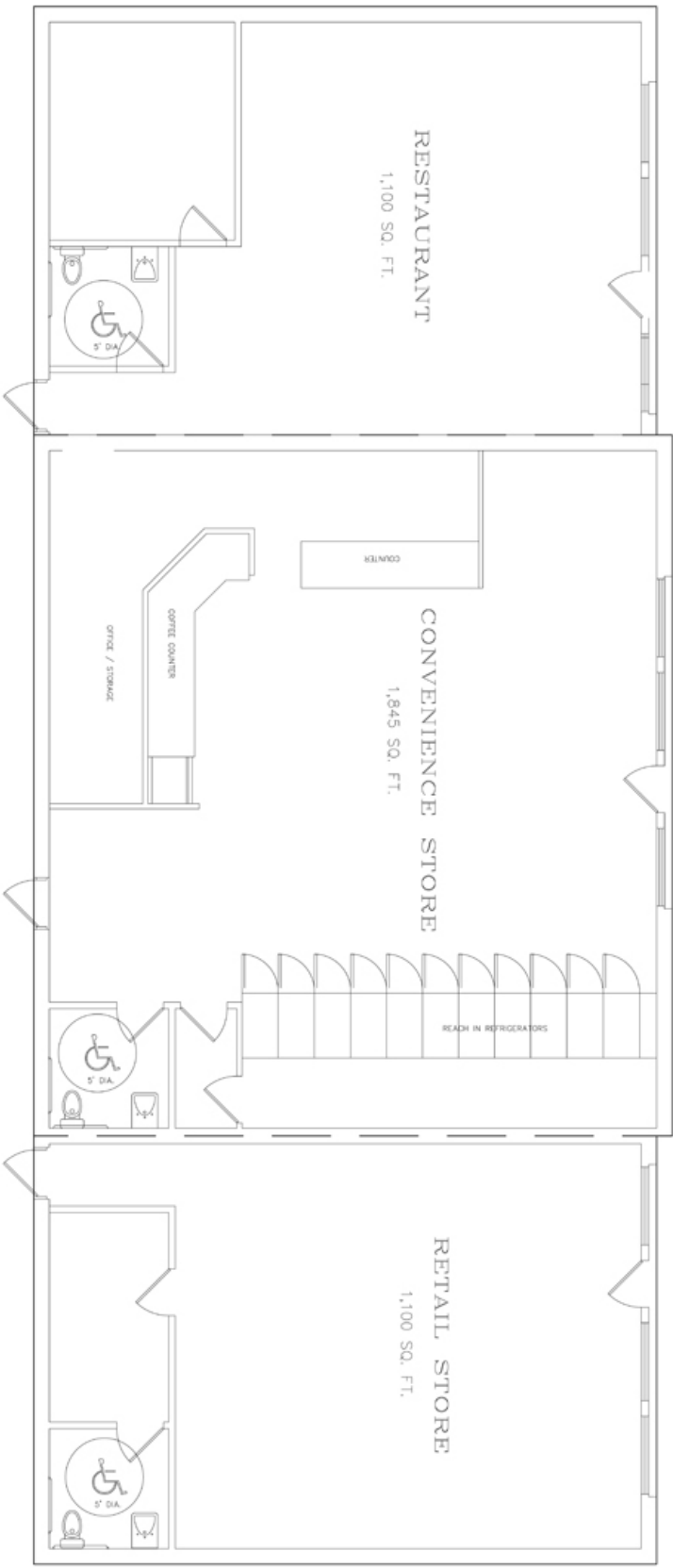
No warranty of representation, expressed or implied is made as to the accuracy of the information contained herein, and same is submitted subject to errors, omissions, change of price, rental, sale or other conditions, withdrawal without notice, and to any special listing conditions imposed by our principals.



Scan this image with your smart phone to get our latest exclusive listings.



Scan this image with your smart phone to join our VIP email list for market updates and property listings.



248 Kent Road (Route 7), New Milford, CT

